

For Research Use Only

# Anti-Human CD83 (HB15e) Mouse IgG2a Recombinant Antibody, PBS Only

Catalog Number: 65581-1-PBS



## Basic Information

Catalog Number:

65581-1-PBS

Size:

1mg, 2mg/ml

Source:

Mouse

Isotype:

IgG2a

GenBank Accession Number:

BC030830

GeneID (NCBI):

9308

ENSEMBL Gene ID:

ENSG00000112149

Full Name:

CD83 molecule

Calculated MW:

205 aa, 23 kDa

Purification Method:

Protein A purification

CloneNo.:

HB15e

## Applications

Tested Applications:

FC

Species Specificity:

human, non-human primates

## Background Information

CD83 is a member of the immunoglobulin (Ig) superfamily, consisting of an extracellular V-type Ig-like domain, a transmembrane domain, and a cytoplasmic tail. CD83 is one of the most prominent markers for fully matured dendritic cells (DCs) (PMID: 17334966). It is also found on the surface of other activated hematopoietic cells, including lymphocytes, monocytes, macrophages, and neutrophils (PMID: 31231400; 17334966). CD83 regulates the maturation, activation, and homeostasis of numerous immune cells (PMID: 31231400; 32362900). CD83 can also be expressed as a soluble form. Soluble CD83 can bind to DCs and inhibit their maturation (PMID: 17334966; 12403928).

## Storage

Storage:

Store at -80°C.

Storage Buffer:

PBS Only

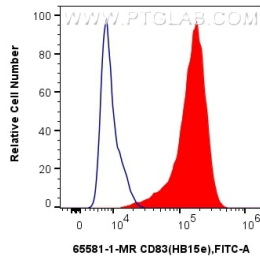
For technical support and original validation data for this product please contact:

T: 1 (888) 4PTGLAB (1-888-478-4522) (toll free in USA), or 1(312) 455-8498 (outside USA)

E: [proteintech@ptglab.com](mailto:proteintech@ptglab.com)  
W: [ptglab.com](http://ptglab.com)

This product is exclusively available under Proteintech Group brand and is not available to purchase from any other manufacturer.

## Selected Validation Data



1x10<sup>6</sup> human monocyte-derived mature dendritic cells were surface stained with 0.25 ug Anti-Human CD83 Mouse IgG2a Recombinant Antibody (65581-1-MR, Clone: HB15e) (red) or 0.25 ug Mouse IgG2a Isotype Control (65208-1-Ig, Clone: C1.18.4) (blue) and CoraLite®488-Conjugated AffiniPure Donkey Anti-Mouse IgG(H+L). Cells were incubated with FC Receptor Block prior to staining. Cells were not fixed. This data was developed using the same antibody clone

