

For Research Use Only

Anti-Human CD83 (HB15e) Mouse IgG2a Recombinant Antibody

Catalog Number: 65581-1-MR



Basic Information

Catalog Number: 65581-1-MR	GenBank Accession Number: BC030830	Purification Method: Protein A purification
Size: 100ug, 1 mg/ml	GeneID (NCBI): 9308	CloneNo.: HB15e
Source: Mouse	ENSEMBL Gene ID: ENSG00000112149	
Isotype: IgG2a	Full Name: CD83 molecule	
	Calculated MW: 205 aa, 23 kDa	

Applications

Tested Applications:
FC

Species Specificity:
human, non-human primates

Background Information

CD83 is a member of the immunoglobulin (Ig) superfamily, consisting of an extracellular V-type Ig-like domain, a transmembrane domain, and a cytoplasmic tail. CD83 is one of the most prominent markers for fully matured dendritic cells (DCs) (PMID: 17334966). It is also found on the surface of other activated hematopoietic cells, including lymphocytes, monocytes, macrophages, and neutrophils (PMID: 31231400; 17334966). CD83 regulates the maturation, activation, and homeostasis of numerous immune cells (PMID: 31231400; 32362900). CD83 can also be expressed as a soluble form. Soluble CD83 can bind to DCs and inhibit their maturation (PMID: 17334966; 12403928).

Storage

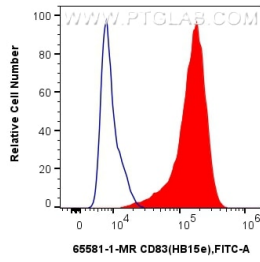
Storage:
Store at 2-8°C. Stable for one year after shipment.

Storage Buffer:
PBS with 0.09% sodium azide.

For technical support and original validation data for this product please contact:
T: 1 (888) 4PTGLAB (1-888-478-4522) (toll free in USA), or 1(312) 455-8498 (outside USA) E: proteintech@ptglab.com
W: ptglab.com

This product is exclusively available under Proteintech Group brand and is not available to purchase from any other manufacturer.

Selected Validation Data



1x10⁶ human monocyte-derived mature dendritic cells were surface stained with 0.25 ug Anti-Human CD83 Mouse IgG2a Recombinant Antibody (65581-1-MR, Clone: HB15e) (red) or 0.25 ug Mouse IgG2a Isotype Control (65208-1-Ig, Clone: C1.18.4) (blue) and CoraLite®488-Conjugated AffiniPure Donkey Anti-Mouse IgG(H+L). Cells were incubated with FC Receptor Block prior to staining. Cells were not fixed.