

For Research Use Only

# Anti-Human CD20 (2H7) Mouse IgG2a Recombinant Antibody



Catalog Number: 65575-1-MR

## Basic Information

Catalog Number:

65575-1-MR

Size:

100ug, 1 mg/ml

Source:

Mouse

Isotype:

IgG2a

GenBank Accession Number:

BC002807

GeneID (NCBI):

931

Full Name:

membrane-spanning 4-domains,  
subfamily A, member 1

Calculated MW:

297 aa, 33 kDa

Purification Method:

Protein A purification

CloneNo.:

2H7

## Applications

Tested Applications:

FC

Species Specificity:

Human

## Background Information

CD20 is a 33-37 kDa transmembrane phosphoprotein belonging to the membrane-spanning 4A family (PMID: 3260267; 16785532). CD20 is a B-lymphocyte surface molecule that is widely expressed during B-cell ontogeny, from early pre-B-cell developmental stages until final differentiation into plasma cells (PMID: 7524522). CD20 functions as calcium-permeable cation channel (PMID: 7684739). It is involved in the regulation of B-cell activation, proliferation and differentiation (PMID: 7524522).

## Storage

Storage:

Store at 2-8°C. Stable for one year after shipment.

Storage Buffer:

PBS with 0.09% sodium azide.

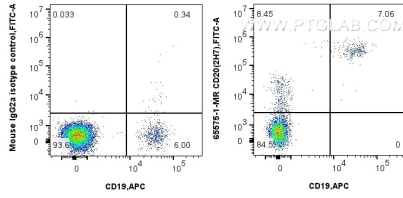
For technical support and original validation data for this product please contact:

T: 1 (888) 4PTGLAB (1-888-478-4522) (toll free  
in USA), or 1(312) 455-8498 (outside USA)

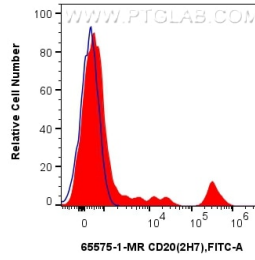
E: [proteintech@ptglab.com](mailto:proteintech@ptglab.com)  
W: [ptglab.com](http://ptglab.com)

This product is exclusively available under Proteintech Group brand and is not available to purchase from any other manufacturer.

## Selected Validation Data



1x10<sup>6</sup> human PBMCs were surface stained with 0.25 ug Anti-Human CD20 Mouse IgG2a Recombinant Antibody (65575-1-MR, Clone: 2H7) or Mouse IgG2a Isotype Control (C1.18.4) (65208-1-Ig, Clone: C1.18.4) and CoraLite®488-Conjugated AffiniPure Donkey Anti-Mouse IgG(H+L). Cells were then stained with APC Anti-Human CD19. Cells were not fixed. Lymphocytes were gated.



1x10<sup>6</sup> human PBMCs were surface stained with 0.25 ug Anti-Human CD20 Mouse IgG2a Recombinant Antibody (65575-1-MR, Clone: 2H7) (red) or Mouse IgG2a Isotype Control (C1.18.4) (65208-1-Ig, Clone: C1.18.4) (blue) and CoraLite®488-Conjugated AffiniPure Donkey Anti-Mouse IgG(H+L). Cells were not fixed. Lymphocytes were gated.