

For Research Use Only

Anti-Human DPP4/CD26 (BA5b) Mouse IgG2a Recombinant Antibody, PBS Only

Catalog Number: 65574-1-PBS



Basic Information

Catalog Number:

65574-1-PBS

Size:

1mg, 2mg/ml

Source:

Mouse

Isotype:

IgG2a

GenBank Accession Number:

BC013329

GeneID (NCBI):

1803

Full Name:

dipeptidyl-peptidase 4

Calculated MW:

88 kDa

Purification Method:

Protein A purification

CloneNo.:

BA5b

Applications

Tested Applications:

FC

Species Specificity:

human

Background Information

CD26, also known as DPP4 (dipeptidyl peptidase-4), is a 110 kDa type II cell-surface glycoprotein widely expressed on T cells, activated B cells, activated NK cells and myeloid cells as well as on epithelial cells, fibroblasts, mesothelium, and endothelial cells of a variety of tissues (PMID:33777580; 26919392). It has ecto-enzyme activity in its extracellular domain and cleaves amino-terminal dipeptides with either L-proline or L-alanine at the penultimate position (PMID: 9553764). CD26 plays roles in diverse biological processes such as immunoregulation, glucose homeostasis, and tumorigenesis (PMID: 33777580).

Storage

Storage:

Store at -80°C. Stable for one year after shipment.

Storage Buffer:

PBS Only

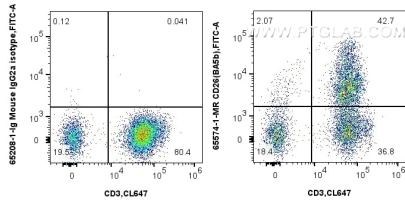
For technical support and original validation data for this product please contact:

T: 1 (888) 4PTGLAB (1-888-478-4522) (toll free in USA), or 1(312) 455-8498 (outside USA)

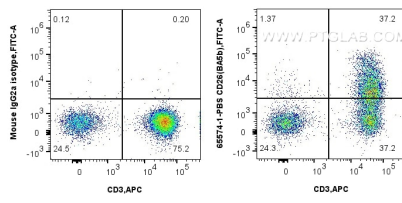
E: proteintech@ptglab.com
W: ptglab.com

This product is exclusively available under Proteintech Group brand and is not available to purchase from any other manufacturer.

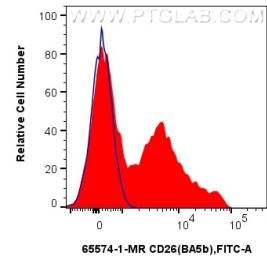
Selected Validation Data



1x10⁶ human PBMCs were surface stained with 0.25 ug Anti-Human CD26 Mouse IgG2a Recombinant Antibody (6574-1-MR, Clone: BA5b) or Mouse IgG2a Isotype Control (65208-1-Ig, Clone: C1.18.4) and CoraLite®488-Conjugated AffiniPure Donkey Anti-Mouse IgG(H+L). Cells were then stained with CoraLite® Plus 647 Anti-Human CD3. Cells were not fixed. Lymphocytes were gated. This data was developed using the same antibody clone



1x10⁶ human PBMCs were surface stained with 0.5 ug Anti-Human CD26 (BA5b) Mouse IgG2a Recombinant Antibody, PBS Only (6574-1-PBS, Clone: BA5b) or 0.5 ug Mouse IgG2a Isotype Control (C1.18.4) (65208-1-Ig, Clone: C1.18.4), CoraLite®488-Conjugated AffiniPure Goat Anti-Mouse IgG(H+L) (SA00013-1), and 0.5 ug APC Anti-Human CD3 (OKT3) (APC-65133, Clone: OKT3). Cells were not fixed. Lymphocytes were gated.



1x10⁶ human PBMCs were surface stained with 0.25 ug Anti-Human CD26 Mouse IgG2a Recombinant Antibody (6574-1-MR, Clone: BA5b) (red) or Mouse IgG2a Isotype Control (65208-1-Ig, Clone: C1.18.4) (blue) and CoraLite®488-Conjugated AffiniPure Donkey Anti-Mouse IgG(H+L). Cells were not fixed. Lymphocytes were gated. This data was developed using the same antibody clone with 6574-1-PBS in a different storage buffer formulation.

