

For Research Use Only

Anti-Human CD163 (GHI/61) Mouse IgG2a Recombinant Antibody, PBS Only

Catalog Number: 65561-1-PBS



Basic Information

Catalog Number:

65561-1-PBS

Size:

1mg, 2mg/ml

Source:

Mouse

Isotype:

IgG2a

GenBank Accession Number:

BC051281

GeneID (NCBI):

9332

ENSEMBL Gene ID:

ENSG00000177575

UNIPROT ID:

Q86VB7

Full Name:

CD163 molecule

Calculated MW:

1156 aa, 125 kDa

Purification Method:

Protein A purification

CloneNo.:

GHI/61

Applications

Tested Applications:

FC

Species Specificity:

human

Background Information

CD163, also known as M130, is a membrane glycoprotein that belongs to the scavenger receptor superfamily (PMID: 8370408). It is an acute phase-regulated and signal-inducing macrophage protein expressed exclusively in monocytes and tissue macrophages (PMID: 11196644). CD163 mediates endocytosis of haptoglobin-haemoglobin complexes (PMID: 11196644). The uptake of haptoglobin by macrophages contributes to the recycling of iron and also to the inflammatory response (PMID: 22900885). Soluble CD163 (sCD163), as a result of ectodomain shedding during inflammatory activation of macrophages, circulates in blood and has been suggested as a plasma/serum marker for macrophage activity (PMID: 12570164).

Storage

Storage:

Store at -80°C. Stable for one year after shipment.

Storage Buffer:

PBS Only

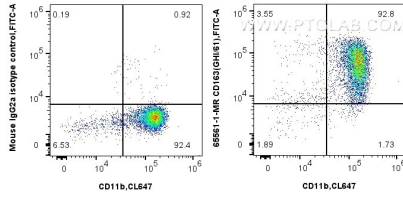
For technical support and original validation data for this product please contact:

T: 1 (888) 4PTGLAB (1-888-478-4522) (toll free in USA), or 1(312) 455-8498 (outside USA)

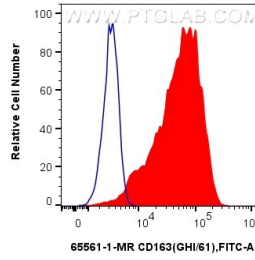
E: proteintech@ptglab.com
W: ptglab.com

This product is exclusively available under Proteintech Group brand and is not available to purchase from any other manufacturer.

Selected Validation Data



1x10⁶ human PBMCs were surface stained with 0.25 ug Anti-Human CD163 Mouse IgG2a Recombinant Antibody (65561-1-MR, Clone:GHI/61) or Mouse IgG2a Isotype Control (65208-1-Ig, Clone: C1.18.4), and CoraLite® 488-Conjugated AffiniPure Donkey Anti-Mouse IgG(H+L). Cells were then stained with CoraLite® Plus 647 Anti-Human CD11b. Cells were incubated with FC Receptor Block prior to staining. Cells were not fixed. Monocytes were gated. This data was



1x10⁶ human PBMCs were surface stained with 0.25 ug Anti-Human CD163 Mouse IgG2a Recombinant Antibody (65561-1-MR, Clone:GHI/61) (red) or Mouse IgG2a Isotype Control (65208-1-Ig, Clone: C1.18.4) (blue), and CoraLite® 488-Conjugated AffiniPure Donkey Anti-Mouse IgG(H+L). Cells were incubated with FC Receptor Block prior to staining. Cells were not fixed. Monocytes were gated. This data was developed using the same antibody clone with 65561-1-PBS in