

For Research Use Only

Anti-Human CD68 (KP1) Mouse IgG1 Recombinant Antibody, PBS Only



Catalog Number: 65521-1-PBS

Basic Information

Catalog Number:

65521-1-PBS

Size:

1mg, 2 mg/ml

Source:

Mouse

Isotype:

IgG1

GenBank Accession Number:

BC015557

GeneID (NCBI):

968

UNIPROT ID:

P34810

Full Name:

CD68 molecule

Calculated MW:

37 kDa

Purification Method:

Affinity purification

CloneNo.:

KP1

Applications

Tested Applications:

FC (Intra)

Species Specificity:

Human

Background Information

CD68 is a type I transmembrane glycoprotein that is highly expressed by human monocytes and tissue macrophages. It belongs to the lysosomal/endosomal-associated membrane glycoprotein (LAMP) family and primarily localizes to lysosomes and endosomes with a smaller fraction circulating to the cell surface. CD68 is also a member of the scavenger receptor family. It may play a role in phagocytic activities of tissue macrophages.

Storage

Storage:

Store at -80°C. Stable for one year after shipment.

Storage Buffer:

PBS only

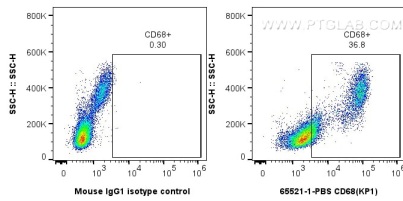
For technical support and original validation data for this product please contact:

T: 1 (888) 4PTGLAB (1-888-478-4522) (toll free
in USA), or 1(312) 455-8498 (outside USA)

E: proteintech@ptglab.com
W: ptglab.com

This product is exclusively available under Proteintech Group brand and is not available to purchase from any other manufacturer.

Selected Validation Data



1x10⁶ human PBMCs were intracellularly stained with 0.25 ug Anti-Human CD68 (65521-1-PBS, Clone: KP1) or 0.25 ug Mouse IgG1 Isotype Control (MOPC-21) (65124-1-Ig, Clone: MOPC-21), and CoraLite®488-Conjugated AffiniPure Goat Anti-Mouse IgG(H+L) (SA00013-1). Cells were fixed with 4% PFA and permeabilized with Flow Cytometry Perm Buffer (PF00011-C).