

For Research Use Only

Anti-Human CD68 (KP1) Mouse IgG1 Recombinant Antibody



Catalog Number: 65521-1-MR

Basic Information

Catalog Number: 65521-1-MR	GenBank Accession Number: BC015557	Purification Method: Affinity purification
Size: 100ug, 1 mg/mL	GeneID (NCBI): 968	CloneNo.: KP1
Source: Mouse	UNIPROT ID: P34810	
Isotype: IgG1	Full Name: CD68 molecule	
	Calculated MW: 37 kDa	

Applications

Tested Applications:
FC (Intra)

Species Specificity:
Human

Background Information

CD68 is a type I transmembrane glycoprotein that is highly expressed by human monocytes and tissue macrophages. It belongs to the lysosomal/endosomal-associated membrane glycoprotein (LAMP) family and primarily localizes to lysosomes and endosomes with a smaller fraction circulating to the cell surface. CD68 is also a member of the scavenger receptor family. It may play a role in phagocytic activities of tissue macrophages.

Storage

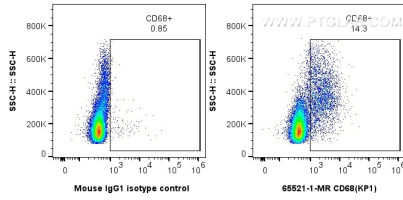
Storage:
Store at 2-8°C. Stable for one year after shipment.

Storage Buffer:
PBS with 0.09% sodium azide.

For technical support and original validation data for this product please contact:
T: 1 (888) 4PTGLAB (1-888-478-4522) (toll free in USA), or 1(312) 455-8498 (outside USA) E: proteintech@ptglab.com
W: ptglab.com

This product is exclusively available under Proteintech Group brand and is not available to purchase from any other manufacturer.

Selected Validation Data



1x10⁶ human PBMCs were intracellularly stained with 0.25 ug Anti-Human CD68 (65521-1-MR, Clone:KP1) or 0.25 ug Mouse IgG1 Isotype Control (MOPC-21) (65124-1-Ig, Clone: MOPC-21), and CoraLite@488-Conjugated AffiniPure Goat Anti-Mouse IgG(H+L) (SA00013-1). Cells were not fixed.