

For Research Use Only

# Anti-Mouse Ly-6C (HK1.4)

Catalog Number: 65296-1-Ig



## Basic Information

<b>Catalog Number:</b> 65296-1-Ig	<b>GenBank Accession Number:</b> BC010764	<b>Purification Method:</b> Affinity purification
<b>Size:</b> 100ug, 0.5 mg/ml	<b>GeneID (NCBI):</b> 17067	<b>CloneNo.:</b> HK1.4
<b>Source:</b> Rat	<b>Full Name:</b> lymphocyte antigen 6 complex, locus C1	
<b>Isotype:</b> IgG2c		

## Applications

**Tested Applications:**  
FC

**Species Specificity:**  
Mouse

## Background Information

Ly-6C (lymphocyte antigen 6 complex, locus C) is a 14-17 kDa GPI-linked cell surface antigen that belongs to the Ly-6 family of glycosyl phosphatidylinositol-anchored surface glycoproteins (PMID: 9192663). Ly-6C is expressed on mouse monocytes/macrophages, endothelial cells, granulocytes, thymocytes, and some T cell subsets (PMID: 2849552). The two alleles of Ly-6C, Ly-6C.1 and Ly-6C.2, result in differential expression of this protein on subpopulations of CD4+ T cells (PMID: 15057973; 9126982). Ly-6C has been reported as a marker of memory CD8+ T cells (PMID: 7543536).

## Storage

**Storage:**  
Store at 2-8°C. Stable for one year after shipment.

**Storage Buffer:**  
PBS with 0.09% sodium azide.

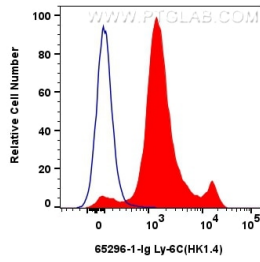
For technical support and original validation data for this product please contact:

T: 1 (888) 4PTGLAB (1-888-478-4522) (toll free in USA), or 1(312) 455-8498 (outside USA)

E: [proteintech@ptglab.com](mailto:proteintech@ptglab.com)  
W: [ptglab.com](http://ptglab.com)

**This product is exclusively available under Proteintech Group brand and is not available to purchase from any other manufacturer.**

## Selected Validation Data



1x10<sup>6</sup> mouse bone marrow cells were surface stained with 0.4 ug Anti-Mouse Ly-6C (HK1.4) (65296-1-Ig, Clone: HK1.4) and CoraLite®488-Conjugated AffiniPure Goat Anti-Mouse IgG(H+L) (SA00013-1) (red), or 0.4 ug Isotype Control (blue). Cells were not fixed.