

For Research Use Only

# Anti-Human IL-12 (1E12H6)

Catalog Number: 65277-1-Ig



## Basic Information

<b>Catalog Number:</b> 65277-1-Ig	<b>GenBank Accession Number:</b> BC104982	<b>Purification Method:</b> Affinity purification
<b>Size:</b> 100ug, 1000 µg/ml	<b>GeneID (NCBI):</b> 3592	<b>CloneNo.:</b> 1E12H6
<b>Source:</b> Mouse	<b>Full Name:</b> interleukin 12A (natural killer cell stimulatory factor 1, cytotoxic lymphocyte maturation factor 1, p35)	
<b>Isotype:</b> IgG1	<b>Calculated MW:</b> 25 kDa	
<b>Immunogen Catalog Number:</b> HZ-1256		

## Applications

**Tested Applications:**  
FC (Intra)

**Species Specificity:**  
human

## Background Information

IL-12 is a heterodimeric cytokine composed of two glycosylated and disulfide-linked subunits (p40 cysteine-linked to p35). IL-12 is a potent regulator of cell mediated immune responses and it induces IFN-gamma production by NK and T cells. It is produced by activated monocytes/macrophage cells, B lymphocytes, and connective tissue type mast cells (PMID: 24821971; 7612223).

## Storage

**Storage:**  
Store at 2-8°C. Avoid exposure to light. Stable for one year after shipment.

**Storage Buffer:**  
PBS with 0.09% sodium azide.

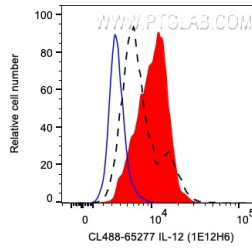
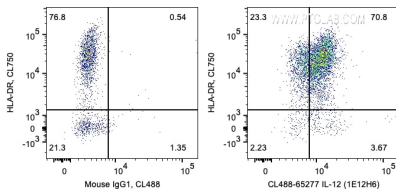
For technical support and original validation data for this product please contact:

T: 1 (888) 4PTGLAB (1-888-478-4522) (toll free in USA), or 1(312) 455-8498 (outside USA)

E: [proteintech@ptglab.com](mailto:proteintech@ptglab.com)  
W: [ptglab.com](http://ptglab.com)

**This product is exclusively available under Proteintech Group brand and is not available to purchase from any other manufacturer.**

## Selected Validation Data



1X10<sup>6</sup> LPS and Brefeldin A treated human PBMCs were surface stained with CoraLite® Plus 750 Anti-Human HLA-DR then intracellularly stained with 0.2 ug CoraLite® Plus 488 Anti-Human IL-12 (CL488-65277, Clone:1E12H6) or Mouse IgG1 Isotype Control. Cells were fixed and permeabilized with Transcription Factor Staining Buffer Kit (PF00011). Monocytes were gated. This data was developed using the CoraLite® Plus 488 conjugated antibody of 65277-1-ig.



1X10<sup>6</sup> LPS and Brefeldin A treated human PBMCs were intracellularly stained with 0.2 ug CoraLite® Plus 488 Anti-Human IL-12 (CL488-65277, Clone:1E12H6) (red) or Mouse IgG1 Isotype Control (blue), or unstimulated and Brefeldin A treated human PBMCs were intracellularly stained with 0.2 ug CoraLite® Plus 488 Anti-Human IL-12 (CL488-65277, Clone:1E12H6) (black, dashed line). Cells were fixed and permeabilized with Transcription Factor Staining Buffer Kit

