

For Research Use Only

Anti-Human CD36 (SMΦ)

Catalog Number: 65248-1-Ig



Basic Information

Catalog Number: 65248-1-Ig	GenBank Accession Number: BC008406	Purification Method: Affinity purification
Size: 100ug, 0.5 mg/ml	GeneID (NCBI): 948	CloneNo.: SMΦ
Source: Mouse	UNIPROT ID: P16671	
Isotype: IgM, kappa	Full Name: CD36 molecule (thrombospondin receptor)	
	Calculated MW: 472 aa, 53 kDa	

Applications

Tested Applications:
FC

Species Specificity:
human

Background Information

CD36, also named as GP3B and GP4, is an 88-kDa membrane glycoprotein present on platelets, monocytes, erythroid precursors, endothelial cells, and several tumor cell lines. CD36 binds to collagen, thrombospondin, anionic phospholipids, long chain fatty acids and may function in the transport and/or as a regulator of fatty acid transport and oxidized LDL. CD36 may function as a cell adhesion molecule. It mediates cytoadherence of Plasmodium falciparum parasitized erythrocytes. Mutation of CD36 will cause platelet glycoprotein IV deficiency which known as CD36 deficiency. Genetic variations in CD36 are associated with susceptibility to coronary heart disease type 7 (CHDS7).

Storage

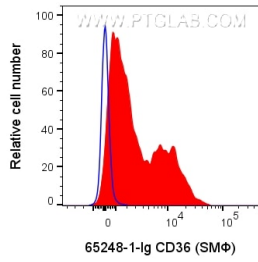
Storage:
Store at 2-8°C. Stable for one year after shipment.

Storage Buffer:
PBS with 0.09% sodium azide.

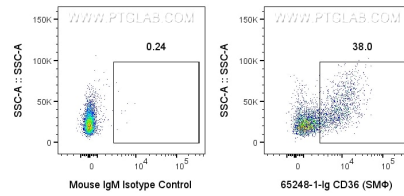
For technical support and original validation data for this product please contact:
T: 1 (888) 4PTGLAB (1-888-478-4522) (toll free in USA), or 1(312) 455-8498 (outside USA) E: proteintech@ptglab.com
W: ptglab.com

This product is exclusively available under Proteintech Group brand and is not available to purchase from any other manufacturer.

Selected Validation Data



100ul human peripheral blood platelets (diluted 1:2 in PBS) were surface stained with 0.2 ug Anti-Human CD36 (65248-1-Ig, Clone:SMΦ) or Mouse IgM Isotype Control (65243-1-Ig) and CoraLite®647-conjugated F(ab')₂ Fragment Goat Anti-Mouse IgG (H+L) (SA00014-8). Cells were not fixed.



100ul human peripheral blood platelets (diluted 1:2 in PBS) were surface stained with 0.2 ug Anti-Human CD36 (65248-1-Ig, Clone:SMΦ) or Mouse IgM Isotype Control (65243-1-Ig) and CoraLite®647-conjugated F(ab')₂ Fragment Goat Anti-Mouse IgG (H+L) (SA00014-8). Cells were not fixed.