

For Research Use Only

Rat IgG2b Isotype Control (LTF-2)

Catalog Number: 65211-1-Ig **2 Publications**



Basic Information

Catalog Number: 65211-1-Ig	GenBank Accession Number: GeneID (NCBI):	Purification Method: Affinity purification
Size: 500ug, 0.5 mg/mL	Full Name:	CloneNo.: LTF-2
Source: Rat		
Isotype: IgG2b, kappa		

Applications

Tested Applications:
FC

Cited Applications:
IF

Species Specificity:

Background Information

The LTF-2 immunoglobulin is useful as an isotype-matched control. The LTF-2 immunoglobulin has an unknown binding specificity and is used as an isotype control for rat IgG2b antibodies. This antibody has been quality-tested for flow cytometry as negative control.

Notable Publications

Author	Pubmed ID	Journal	Application
Xinzhi Li	34893641	Nat Commun	
Sarah K Schröder	38464972	Front Endocrinol (Lausanne)	IF

Storage

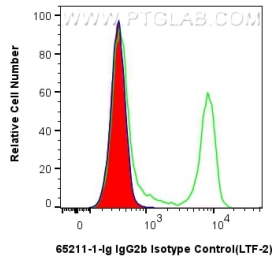
Storage:
Store at 2-8°C. Stable for one year after shipment.

Storage Buffer:
PBS with 0.09% sodium azide.

For technical support and original validation data for this product please contact:
T: 1 (888) 4PTGLAB (1-888-478-4522) (toll free in USA), or 1(312) 455-8498 (outside USA) E: proteintech@ptglab.com
W: ptglab.com

This product is exclusively available under Proteintech Group brand and is not available to purchase from any other manufacturer.

Selected Validation Data



1×10^6 mouse splenocytes were surface stained with 0.25 μ g Rat IgG2b Isotype Control (LTF-2) (65211-1-Ig, Clone: LTF-2) (red) or Anti-Mouse CD4 (GK1.5) (65104-1-Ig, Clone: GK1.5) (green), and FITC anti-rat IgG2b Antibody. Cells were not fixed.