

For Research Use Only

# Anti-Human CD11c (BU15)

Catalog Number: 65196-1-Ig



## Basic Information

<b>Catalog Number:</b> 65196-1-Ig	<b>GenBank Accession Number:</b> BC038237	<b>Purification Method:</b> Protein G purification
<b>Size:</b> 100ug, 500 µg/ml	<b>GeneID (NCBI):</b> 3687	<b>CloneNo.:</b> BU15
<b>Source:</b> Mouse	<b>Full Name:</b> integrin, alpha X (complement component 3 receptor 4 subunit)	
<b>Isotype:</b> IgG1, kappa	<b>Calculated MW:</b> 1169 aa, 129 kDa	

## Applications

**Tested Applications:**  
FC

**Species Specificity:**  
Human

## Background Information

Integrins are cell adhesion receptors that are heterodimers composed of non-covalently associated  $\alpha$  and  $\beta$  subunits (PMID: 9779984). CD11c, also known as integrin  $\alpha X$ , is a type I transmembrane glycoprotein present on a variety of cells, including monocytes/macrophages, granulocytes, a subset of B cells, NK cells and dendritic cells (PMID: 2897326; 1680915; 1694698; 17389580). As a result of its high level of expression on most dendritic cells, CD11c is typically considered to be a marker of conventional dendritic cells (PMID: 27119555). CD11c forms an  $\alpha/\beta$  heterodimer with CD18 (integrin  $\beta 2$ ). CD11c/CD18 acts as a receptor for fibrinogen and is important in monocyte adhesion and chemotaxis (PMID: 1671533).

## Storage

**Storage:**  
Store at 2-8°C. Stable for one year after shipment.  
**Storage Buffer:**  
PBS with 0.09% sodium azide.

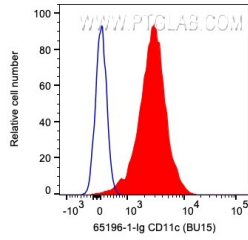
For technical support and original validation data for this product please contact:

T: 1 (888) 4PTGLAB (1-888-478-4522) (toll free in USA), or 1(312) 455-8498 (outside USA)

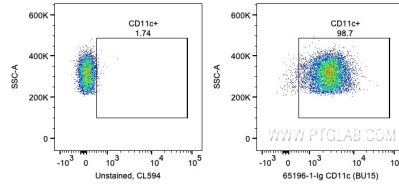
E: [proteintech@ptglab.com](mailto:proteintech@ptglab.com)  
W: [ptglab.com](http://ptglab.com)

This product is exclusively available under Proteintech Group brand and is not available to purchase from any other manufacturer.

## Selected Validation Data



1X10<sup>6</sup> human PBMCs were surface stained with 0.2 ug Anti-Human CD11c (65196-1-Ig, Clone:BU15) and CoraLite®594-Conjugated AffiniPure Goat Anti-Mouse IgG(H+L) at dilution 1:1000 (red) or unstained. Cells were not fixed. Monocytes were gated.



1X10<sup>6</sup> human PBMCs were surface stained with 0.2 ug Anti-Human CD11c (65196-1-Ig, Clone:BU15) and CoraLite®594-Conjugated AffiniPure Goat Anti-Mouse IgG(H+L) at dilution 1:1000 or unstained. Cells were not fixed. Monocytes were gated.