

For Research Use Only

Anti-Human CD13 (WM15), PBS Only

Catalog Number: 65186-1-PBS



Basic Information

Catalog Number: 65186-1-PBS	GenBank Accession Number: BC058928	Purification Method: Protein A purification
Size: 1mg, 1 mg/ml	GeneID (NCBI): 290	CloneNo.: WM15
Source: Mouse	ENSEMBL Gene ID: ENSG00000166825	
Isotype: IgG1, kappa	UNIPROT ID: P15144	
	Full Name: alanyl (membrane) aminopeptidase	
	Calculated MW: 110 kDa	

Applications

Tested Applications:
IF/ICC, FC

Species Specificity:
human, non-human primates

Background Information

CD13, also named as APN, ANPEP (aminopeptidase N) or PEPN, is belongs to the peptidase M1 family. CD13 is a heavily glycosylated, ~150-240 kDa, type-II membrane, expressed by most cells of myeloid origin including monocytes, macrophages, granulocytes, and their hematopoietic precursors. It is also abundantly expressed in the brush border of epithelial cells from renal proximal tubules and small intestine, in prostatic epithelial cells, in bile duct canaliculi, in mast cells, and, in some cases, in fibroblasts and smooth muscle cells. CD13 is a multifunctional protein and plays varying roles in cell migration, cell proliferation, cell differentiation and so on. CD13 participates in angiogenesis generating and modulating angiogenic signals, and can be a marker of angiogenic vessels. CD13 is also a pan-myeloid marker, present on mature granulocytes and monocytes. (PMID: 8805662, 10098327, 18603472, 18097955, 17897790, 17888402, 21339174)

Storage

Storage:
Store at -80°C.

Storage Buffer:
PBS Only

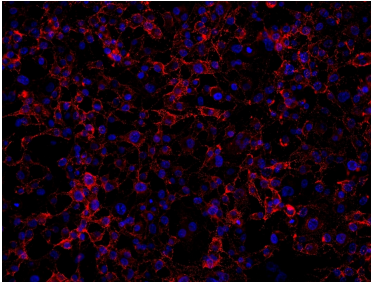
For technical support and original validation data for this product please contact:

T: 1 (888) 4PTGLAB (1-888-478-4522) (toll free in USA), or 1(312) 455-8498 (outside USA)

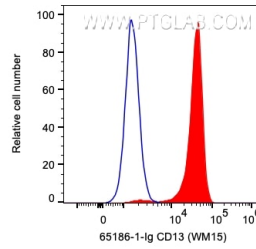
E: proteintech@ptglab.com
W: ptglab.com

This product is exclusively available under Proteintech Group brand and is not available to purchase from any other manufacturer.

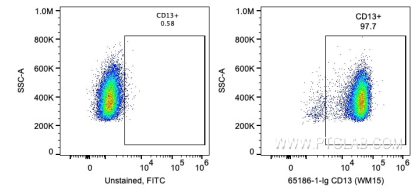
Selected Validation Data



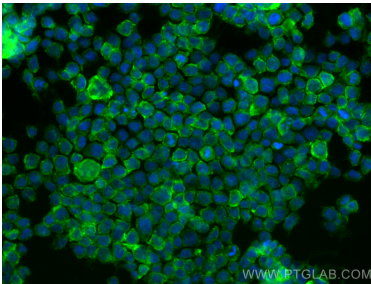
Immunofluorescent analysis of un-fixed HUVEC cells using CD13 antibody (65186-1-Ig, Clone: WM15) at dilution of 1:1000 and Multi-rAb CoraLite® Plus 594-Goat Anti-Mouse Recombinant Secondary Antibody (H+L) (RGAM004). This data was developed using the same antibody clone with 65186-1-PBS in a different storage buffer formulation.



1X10⁶ human PBMCs were surface stained with 0.2 ug Anti-Human CD13 (65186-1-Ig, Clone:WM15) and FITC-Goat anti-Mouse IgG at dilution 1:1000 or unstained. Cells were not fixed. Monocytes were gated. This data was developed using the same antibody clone with 65186-1-PBS in a different storage buffer formulation.



1X10⁶ human PBMCs were surface stained with 0.2 ug Anti-Human CD13 (65186-1-Ig, Clone:WM15) and FITC-Goat anti-Mouse IgG at dilution 1:1000 or unstained. Cells were not fixed. Monocytes were gated. This data was developed using the same antibody clone with 65186-1-PBS in a different storage buffer formulation.



Immunofluorescent analysis of (4% PFA) fixed THP-1 cells using CD13 antibody (65186-1-Ig, Clone: WM15) at dilution of 1:1000 and CoraLite®488-Conjugated Goat Anti-Mouse IgG(H+L) (SA00013-1). This data was developed using the same antibody clone with 65186-1-PBS in a different storage buffer formulation.