

For Research Use Only

Anti-Human CD3 (OKT3)

Catalog Number: 65133-1-Ig **2 Publications**



Basic Information

Catalog Number:

65133-1-Ig

Size:

100ug, 0.5 mg/ml

Source:

Mouse

Isotype:

IgG2a, kappa

GenBank Accession Number:

BC049847

GeneID (NCBI):

916

ENSEMBL Gene ID:

ENSG00000198851

UNIPROT ID:

P07766

Full Name:

CD3e molecule, epsilon (CD3-TCR complex)

Calculated MW:

207 aa, 23 kDa

Purification Method:

Affinity purification

CloneNo.:

OKT3

Applications

Tested Applications:

FC

Cited Applications:

IHC, Cell treatment

Species Specificity:

human

Cited Species:

human

Background Information

CD3 is a multimeric protein associated with the T-cell receptor (TCR) to form a complex involved in antigen recognition and signal transduction (PMID: 15885124). CD3 is composed of CD3 γ , δ , ϵ , and ζ chains (PMID: 1826255). It is expressed by thymocytes in a developmentally regulated manner, T cells, and some NK cells (PMID: 3289580). The TCR recognizes antigens bound to major histocompatibility complex (MHC) molecules. TCR-mediated peptide-MHC recognition is transmitted to the CD3 complex, leading to the intracellular signal transduction (PMID: 11985657).

Notable Publications

Author	Pubmed ID	Journal	Application
Wenhao Niu	39086477	Front Immunol	IHC
Guiqin Ye	38974523	J Pharm Anal	Cell treatment

Storage

Storage:

Store at 2-8°C. Stable for one year after shipment.

Storage Buffer:

PBS with 0.09% sodium azide.

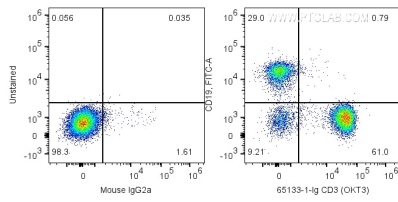
For technical support and original validation data for this product please contact:

T: 1 (888) 4PTGLAB (1-888-478-4522) (toll free in USA), or 1(312) 455-8498 (outside USA)

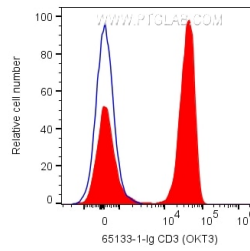
E: proteintech@ptglab.com
W: ptglab.com

This product is exclusively available under Proteintech Group brand and is not available to purchase from any other manufacturer.

Selected Validation Data



1X10⁶ human PBMCs were surface co-stained with FITC Anti-human CD19 and 0.2 ug Anti-Human CD3 (65133-1-Ig, Clone: OKT3) labeled with FlexAble CoraLite® Plus 647 Antibody Labeling Kit for Mouse IgG2a (KFA043) or CoraLite® Plus 647 conjugated Mouse IgG2a Isotype Control. Cells were not fixed. Lymphocytes were gated.



1X10⁶ human PBMCs were surface stained with 0.2 ug Anti-Human CD3 (65133-1-Ig, Clone: OKT3) labeled with FlexAble CoraLite® Plus 647 Antibody Labeling Kit for Mouse IgG2a (KFA043) (red) or CoraLite® Plus 647 conjugated Mouse IgG2a Isotype Control. Cells were not fixed. Lymphocytes were gated.