

For Research Use Only

Anti-Human CD40 (G28.5), PBS Only

Catalog Number: 65103-1-PBS



Basic Information

Catalog Number: 65103-1-PBS	GenBank Accession Number: BC012419	Purification Method: Affinity purification
Size: 100ug, 2mg/ml	GeneID (NCBI): 958	CloneNo.: G28.5
Source: Mouse	ENSEMBL Gene ID: ENSG00000101017	
Isotype: IgG1, kappa	Full Name: CD40 molecule, TNF receptor superfamily member 5	
	Calculated MW: 277 aa, 31 kDa	

Applications

Tested Applications:
FC, Sandwich ELISA, Indirect ELISA

Species Specificity:
human

Product Information

65103-1-PBS targets CD40 as part of a matched antibody pair:

MP50064-1: 66965-2-PBS capture and 65103-1-PBS detection (validated in Sandwich ELISA)

Unconjugated mouse monoclonal antibody pair in PBS only (BSA and azide free) storage buffer at a concentration of 1 mg/mL, ready for conjugation.

This conjugation ready format makes antibodies ideal for use in many applications including: ELISAs, multiplex assays requiring matched pairs, mass cytometry, and multiplex imaging applications. Antibody use should be optimized by the end user for each application and assay.

Background Information

CD40, also named as TNFRSF5 and Bp50, is a type I transmembrane protein that belongs to the tumor necrosis factor-R (TNF-R) family (PMID: 10647992). CD40 is expressed on B cells, dendritic cells (DCs), monocytes, platelets, and macrophages as well as by non-hematopoietic cells such as myofibroblasts, fibroblasts, epithelial, and endothelial cells (PMID: 19426221). It is a receptor for TNFSF5/CD40LG. CD40L/CD40 interactions are essential for immunoglobulin (Ig) isotype switching, germinal center formation and the development of B cell memory (PMID: 7516405; 11675497).

Storage

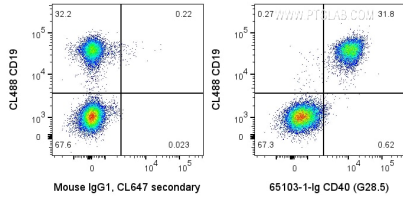
Storage:
Store at -80°C.

Storage Buffer:
PBS Only

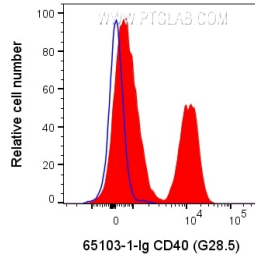
For technical support and original validation data for this product please contact:
T: 1 (888) 4PTGLAB (1-888-478-4522) (toll free in USA), or 1(312) 455-8498 (outside USA) E: proteintech@ptglab.com
W: ptglab.com

This product is exclusively available under Proteintech Group brand and is not available to purchase from any other manufacturer.

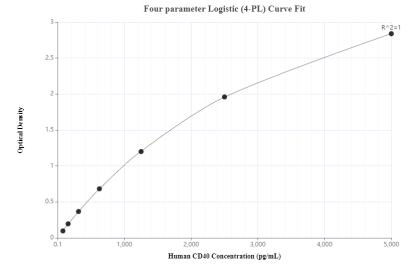
Selected Validation Data



1X10⁶ human PBMCs were surface stained with 0.2 ug Anti-Human CD40 (65103-1-Ig, Clone:G28.5) or Mouse IgG1 Isotype Control and CoraLite®647-Conjugated AffiniPure Goat Anti-Mouse IgG(H+L) at dilution 1:1000. Cells were then stained with CoraLite®488 Anti-Human CD19. Cells were not fixed. Lymphocytes were gated. This data was developed using the same antibody clone with 65103-1-PBS in a different storage buffer formulation.



1X10⁶ human PBMCs were surface stained with 0.2 ug Anti-Human CD40 (65103-1-Ig, Clone:G28.5) or Mouse IgG1 Isotype Control and CoraLite®647-Conjugated AffiniPure Goat Anti-Mouse IgG(H+L) at dilution 1:1000. Cells were not fixed. Lymphocytes were gated. This data was developed using the same antibody clone with 65103-1-PBS in a different storage buffer formulation.



Sandwich ELISA standard curve of MP50064-1, CD40 Monoclonal Matched Antibody Pair, PBS Only. Capture antibody: 66965-2-PBS. Detection antibody: 65103-1-PBS. Standard: Ag28040. Range: 78.1-5000 pg/mL.