

For Research Use Only

# Anti-Mouse CD16/CD32 (93), PBS Only

Catalog Number: 65057-1-PBS



## Basic Information

Catalog Number:

65057-1-PBS

Size:

100ug, 1 mg/ml

Source:

Rat

Isotype:

IgG2a, lambda

GenBank Accession Number:

BC038070

GeneID (NCBI):

14130

UNIPROT ID:

P08101

Full Name:

Fc receptor, IgG, low affinity IIb

Purification Method:

Protein G purification

CloneNo.:

93

## Applications

Tested Applications:

FC

Species Specificity:

mouse

## Background Information

CD16 (FcγRIII) is a 50-70 kDa low affinity Fc receptor found on the surface of natural killer cells, neutrophil polymorphonuclear leukocytes, monocytes and macrophages. CD16 mediates antibody-dependent cellular cytotoxicity (ADCC) and other antibody-dependent responses, such as phagocytosis. CD32 (FcγRII) is a 40 kD transmembrane glycoprotein that binds to the Fc region of IgG with low affinity. CD32 is present on phagocytic cells such as macrophages and neutrophils, and is involved in the process of phagocytosis and clearing of immune complexes. Rat anti mouse CD16/32 antibody, clone 93 is specific to the common epitope of CD16 and CD32. It can be used for blocking non-specific binding of immunoglobulins to the Fc receptors by preincubating the cells with the purified antibody at 1 ug per million cells in 100 uL volume for 5-10 minutes prior to immunostaining.

## Storage

Storage:

Store at -80°C.

Storage Buffer:

PBS Only, pH7.3

For technical support and original validation data for this product please contact:

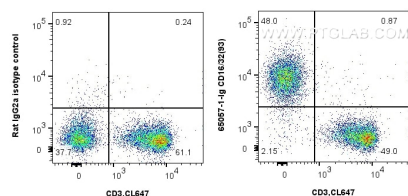
T: 1 (888) 4PTGLAB (1-888-478-4522) (toll free in USA), or 1(312) 455-8498 (outside USA)

E: [proteintech@ptglab.com](mailto:proteintech@ptglab.com)

W: [ptglab.com](http://ptglab.com)

This product is exclusively available under Proteintech Group brand and is not available to purchase from any other manufacturer.

## Selected Validation Data



1X10<sup>6</sup> C57BL/6 mouse splenocytes were surface stained with 0.5 ug Anti-Mouse CD16/32 (65057-1-Ig, Clone: 93) and FITC anti-rat IgG2a Antibody at dilution 1:100, or 0.5 ug Rat IgG2a Isotype Control (2A3) (65209-1-Ig, Clone: 2A3) and FITC anti-rat IgG2a Antibody at dilution 1:100. Cells were co-stained with CoraLite® Plus 647 Anti-Mouse CD3 (17A2) (CL647-65077, Clone: 17A2). Cells were not fixed. This data was developed using the same antibody clone

