

For Research Use Only

# Anti-Human CD107a / LAMP1 (H4A3), PBS Only

Catalog Number: 65051-1-PBS



## Basic Information

<b>Catalog Number:</b> 65051-1-PBS	<b>GenBank Accession Number:</b> BC006345	<b>Purification Method:</b> Protein G purification
<b>Size:</b> 100ug, 2 mg/ml	<b>GeneID (NCBI):</b> 3916	<b>CloneNo.:</b> H4A3
<b>Source:</b> Mouse	<b>ENSEMBL Gene ID:</b> ENSG00000185896	
<b>Isotype:</b> IgG1, kappa	<b>UNIPROT ID:</b> P11279	
	<b>Full Name:</b> lysosomal-associated membrane protein 1	
	<b>Calculated MW:</b> 45 kDa	
	<b>Observed MW:</b> 100-120 kDa	

## Applications

**Tested Applications:**  
WB, IF/ICC, FC (Intra)

**Species Specificity:**  
human

## Background Information

LAMP1 (CD107a) is a heavily glycosylated membrane protein enriched in the lysosomal membrane. LAMP1 is extensively glycosylated with asparagine-linked oligosaccharides which protect it from intracellular proteolysis (PMID: 10521503). Although LAMP1 is expressed largely in the endosome-lysosomal membrane of cells, it is also found on the plasma membrane (PMID: 16168398). Elevated LAMP1 expression at the cell surface has also been detected during platelet and granulocytic cell activation, as well as in some tumor cells (PMID: 29085473). LAMP1 functions to provide selectins with carbohydrate ligands. This protein has also been shown to be a marker of degranulation on lymphocytes such as CD8+ and NK cells and may also play a role in tumor cell differentiation and metastasis (PMID: 18835598; 29085473; 9426697).

## Storage

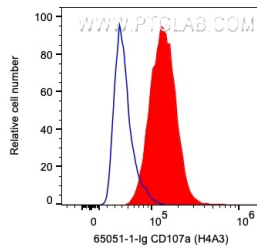
**Storage:**  
Store at 2-8°C. Stable for one year after shipment.

**Storage Buffer:**  
PBS only

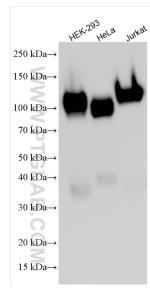
For technical support and original validation data for this product please contact:  
T: 1 (888) 4PTGLAB (1-888-478-4522) (toll free in USA), or 1(312) 455-8498 (outside USA)      E: proteintech@ptglab.com  
W: ptglab.com

This product is exclusively available under Proteintech Group brand and is not available to purchase from any other manufacturer.

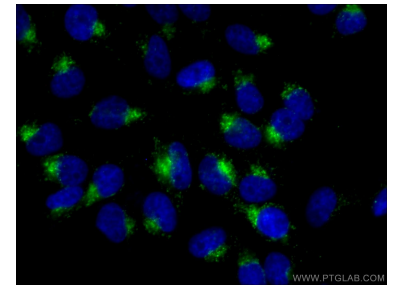
## Selected Validation Data



1X10<sup>6</sup> HeLa cells were intracellularly stained with 0.2 ug Anti-Human CD107a / LAMP1 (65051-1-Ig, Clone:H4A3) and CoraLite<sup>®</sup> 594-Conjugated AffiniPure Goat Anti-Mouse IgG(H+L) at dilution 1:1000. Cells were fixed with 4% PFA and permeabilized with Flow Cytometry Perm Buffer (PF00011-C). This data was developed using the same antibody clone with 65051-1-PBS in a different storage buffer formulation.



Various lysates were subjected to SDS PAGE followed by western blot with 65051-1-Ig (CD107a / LAMP1 antibody) at dilution of 1:4000 incubated at room temperature for 1.5 hours. This data was developed using the same antibody clone with 65051-1-PBS in a different storage buffer formulation.



Immunofluorescent analysis of (4% PFA) fixed HeLa cells using 65051-1-Ig (CD107a antibody) at dilution of 1:100 and CoraLite488-Conjugated AffiniPure Goat Anti-Mouse IgG(H+L). This data was developed using the same antibody clone with 65051-1-PBS in a different storage buffer formulation.