

For Research Use Only

Anti-Mouse CD107a / LAMP1 (1D4B), PBS Only

Catalog Number: 65050-1-PBS



Basic Information

Catalog Number:

65050-1-PBS

Size:

100ug, 2mg/ml

Source:

Rat

Isotype:

IgG2a, kappa

GenBank Accession Number:

BC006785

GeneID (NCBI):

16783

UNIPROT ID:

P11438

Full Name:

lysosomal-associated membrane
protein 1

Purification Method:

Protein G purification

CloneNo.:

1D4B

Applications

Tested Applications:

IF/ICC, FC (Intra)

Species Specificity:

mouse

Background Information

LAMP1 (CD107a) is a heavily glycosylated membrane protein enriched in the lysosomal membrane. LAMP1 is extensively glycosylated with asparagine-linked oligosaccharides which protect it from intracellular proteolysis (PMID: 10521503). Although LAMP1 is expressed largely in the endosome-lysosomal membrane of cells, it is also found on the plasma membrane (PMID: 16168398). Elevated LAMP1 expression at the cell surface has also been detected during platelet and granulocytic cell activation, as well as in some tumor cells (PMID: 29085473). LAMP1 functions to provide selectins with carbohydrate ligands. This protein has also been shown to be a marker of degranulation on lymphocytes such as CD8+ and NK cells and may also play a role in tumor cell differentiation and metastasis (PMID: 18835598; 29085473; 9426697).

Storage

Storage:

Store at -80°C.

Storage Buffer:

PBS Only

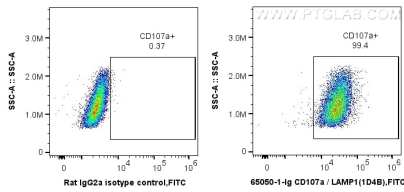
For technical support and original validation data for this product please contact:

T: 1 (888) 4PTGLAB (1-888-478-4522) (toll free
in USA), or 1(312) 455-8498 (outside USA)

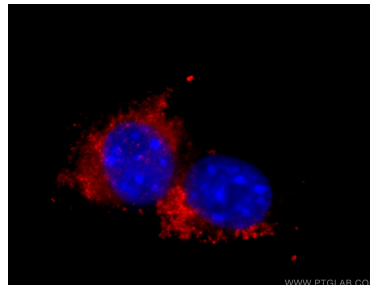
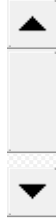
E: proteintech@ptglab.com
W: ptglab.com

This product is exclusively available under Proteintech Group brand and is not available to purchase from any other manufacturer.

Selected Validation Data



1X10⁶ NIH/3T3 cells were intracellularly stained with 0.5 ug Anti-Mouse CD107a / LAMP1 (65050-1-Ig, Clone:1D4B) and FITC anti-Rat IgG2a antibody at dilution 1:100, or 0.5 ug Rat IgG2a Isotype Control (2A3) (65209-1-Ig, Clone: 2A3) and FITC anti-Rat IgG2a antibody at dilution 1:100. Cells were fixed with 4% PFA and permeabilized with Flow Cytometry Perm Buffer (PF00011-C). This data was developed using the same antibody clone with 65050-1-PBS in a



Immunofluorescent analysis of (4% PFA) fixed NIH/3T3 cells using 65050-1-Ig (CD107a antibody) at dilution of 1:100 and Rhodamine (TRITC)-conjugated Goat Anti-Rat IgG(H+L). This data was developed using the same antibody clone with 65050-1-PBS in a different storage buffer formulation.