

For Research Use Only

CCL22/MDC Monoclonal antibody, PBS Only (Capture)

Catalog Number: 60754-1-PBS



Basic Information

Catalog Number: 60754-1-PBS	GenBank Accession Number: BC027952	Purification Method: Protein G Magarose purification
Size: 100ug , Concentration: 1 mg/ml by Nanodrop;	GeneID (NCBI): 6367	CloneNo.: 1G5E10
Source: Mouse	UNIPROT ID: O00626	
Isotype: IgG1	Full Name: chemokine (C-C motif) ligand 22	
Immunogen Catalog Number: AG4275	Calculated MW: 93 aa, 11 kDa	

Applications

Tested Applications:
Cytometric bead array, Indirect ELISA, Sample test

Species Specificity:
human

Product Information

60754-1-PBS targets CCL22/MDC as part of a matched antibody pair:

MP51202-1: 60754-1-PBS capture and 60754-2-PBS detection (validated in Cytometric bead array)

Unconjugated mouse monoclonal antibody pair in PBS only (BSA and azide free) storage buffer at a concentration of 1 mg/mL, ready for conjugation.

This conjugation ready format makes antibodies ideal for use in many applications including: ELISAs, multiplex assays requiring matched pairs, mass cytometry, and multiplex imaging applications. Antibody use should be optimized by the end user for each application and assay.

Storage

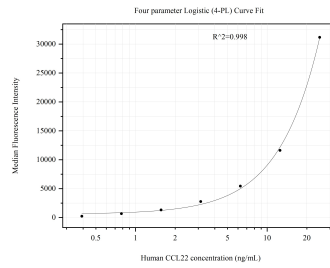
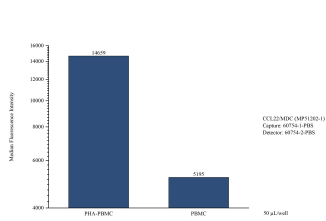
Storage:
Store at -80°C.

Storage Buffer:
PBS Only

For technical support and original validation data for this product please contact:
T: 1 (888) 4PTGLAB (1-888-478-4522) (toll free in USA), or 1(312) 455-8498 (outside USA) E: proteintech@ptglab.com W: ptglab.com

This product is exclusively available under Proteintech Group brand and is not available to purchase from any other manufacturer.

Selected Validation Data



Cytometric bead array of Human peripheral blood mononuclear cells (PBMC) supernatant using MP51202-1, CCL22/MDC Monoclonal Matched Antibody Pair, PBS Only. Capture antibody: 60754-1-PBS. Detection antibody: 60754-2-PBS. PBMC were cultured unstimulated or stimulated with 10 µg/mL PHA for 3 days. 50 µL of the supernatant was analyzed using MP51202-1.

Cytometric bead array standard curve of MP51202-1, CCL22/MDC Monoclonal Matched Antibody Pair, PBS Only. Capture antibody: 60754-1-PBS. Detection antibody: 60754-2-PBS. Standard: Ag4275. Range: 0.391-25 ng/mL.