

For Research Use Only

# SOST/Sclerostin Monoclonal antibody, PBS Only (Capture)

Catalog Number: 60726-1-PBS



## Basic Information

<b>Catalog Number:</b> 60726-1-PBS	<b>GenBank Accession Number:</b> BC101086	<b>Purification Method:</b> Protein A purification
<b>Size:</b> 100ug , Concentration: 1 mg/ml by Nanodrop;	<b>GeneID (NCBI):</b> 50964	<b>CloneNo.:</b> 1E10G2
<b>Source:</b> Mouse	<b>UNIPROT ID:</b> Q9BQB4	
<b>Isotype:</b> IgG2a	<b>Full Name:</b> sclerosteosis	
	<b>Calculated MW:</b> 213 aa, 24 kDa	

## Applications

**Tested Applications:**  
Cytometric bead array, Sandwich ELISA, Indirect ELISA,  
Sample test

**Species Specificity:**  
human

## Product Information

60726-1-PBS targets SOST/Sclerostin as part of a matched antibody pair:

MP51041-1: 60726-1-PBS capture and 60726-2-PBS detection (validated in Cytometric bead array)

MP51041-2: 60726-1-PBS capture and 60726-3-PBS detection (validated in Cytometric bead array, Sandwich ELISA)

Unconjugated mouse monoclonal antibody pair in PBS only (BSA and azide free) storage buffer at a concentration of 1 mg/mL, ready for conjugation.

This conjugation ready format makes antibodies ideal for use in many applications including: ELISAs, multiplex assays requiring matched pairs, mass cytometry, and multiplex imaging applications. Antibody use should be optimized by the end user for each application and assay.

## Storage

**Storage:**  
Store at -80°C.  
**Storage Buffer:**  
PBS Only

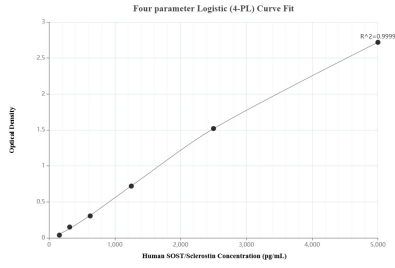
For technical support and original validation data for this product please contact:

T: 1 (888) 4PTGLAB (1-888-478-4522) (toll free  
in USA), or 1(312) 455-8498 (outside USA)

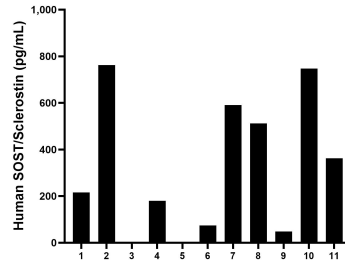
E: [proteintech@ptglab.com](mailto:proteintech@ptglab.com)  
W: [ptglab.com](http://ptglab.com)

**This product is exclusively available under Proteintech Group brand and is not available to purchase from any other manufacturer.**

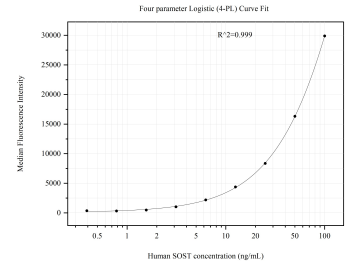
## Selected Validation Data



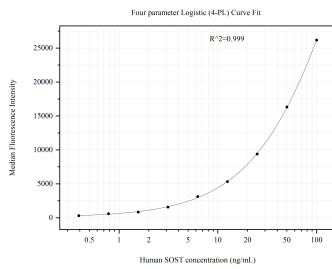
Sandwich ELISA standard curve of MP51041-2, Human SOST/Sclerostin Monoclonal Matched Antibody Pair - PBS only. 60726-1-PBS was coated to a plate as the capture antibody and incubated with serial dilutions of standard Eg0407. 60726-3-PBS was HRP conjugated as the detection antibody. Range: 156-5000 pg/mL



Serum of eleven individual healthy human donors was measured. The SOST/Sclerostin concentration of detected samples was determined to be 388.2 pg/mL with a range of ND-762.5 pg/mL



Cytometric bead array standard curve of MP51041-1, SOST/Sclerostin Monoclonal Matched Antibody Pair, PBS Only. Capture antibody: 60726-1-PBS. Detection antibody: 60726-2-PBS. Standard:Eg0407. Range: 0.391-100 ng/mL



Cytometric bead array standard curve of MP51041-2, SOST Monoclonal Matched Antibody Pair, PBS Only. Capture antibody: 60726-1-PBS. Detection antibody: 60726-3-PBS. Standard:Eg0407. Range: 0.391-100 ng/mL