

For Research Use Only

QSOX1 Monoclonal antibody, PBS Only (Detector)

Catalog Number: 60676-2-PBS



Basic Information

Catalog Number: 60676-2-PBS	GenBank Accession Number: BC017692	Purification Method: Protein G Magarose purification
Size: 100ug , Concentration: 1 mg/ml by Nanodrop;	GeneID (NCBI): 5768	CloneNo.: 3B1G3
Source: Mouse	UNIPROT ID: O00391	
Isotype: IgG1	Full Name: quiescin Q6 sulfhydryl oxidase 1	
Immunogen Catalog Number: AG17036	Calculated MW: 747 aa, 83 kDa	

Applications

Tested Applications:
Cytometric bead array, Sandwich ELISA, Indirect ELISA,
Sample test

Species Specificity:
human

Product Information

60676-2-PBS targets QSOX1 as part of a matched antibody pair:

MP50971-1: 60676-1-PBS capture and 60676-2-PBS detection (validated in Cytometric bead array, Sandwich ELISA)

Unconjugated mouse monoclonal antibody pair in PBS only (BSA and azide free) storage buffer at a concentration of 1 mg/mL, ready for conjugation.

This conjugation ready format makes antibodies ideal for use in many applications including: ELISAs, multiplex assays requiring matched pairs, mass cytometry, and multiplex imaging applications. Antibody use should be optimized by the end user for each application and assay.

Storage

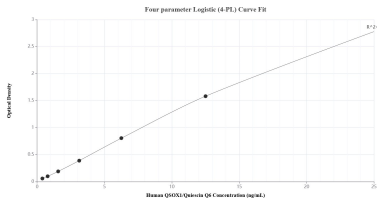
Storage:
Store at -80°C.

Storage Buffer:
PBS Only

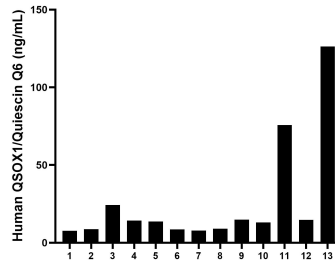
For technical support and original validation data for this product please contact:
T: 1 (888) 4PTGLAB (1-888-478-4522) (toll free in USA), or 1(312) 455-8498 (outside USA) E: proteintech@ptglab.com
W: ptglab.com

This product is exclusively available under Proteintech Group brand and is not available to purchase from any other manufacturer.

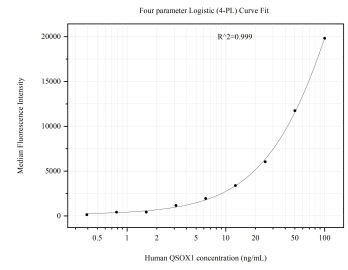
Selected Validation Data



Sandwich ELISA standard curve of MP50971-1, Human QSOX1/Quiescin Q6 Monoclonal Matched Antibody Pair - PBS only. 60676-1-PBS was coated to a plate as the capture antibody and incubated with serial dilutions of standard Ag17036. 60676-2-PBS was HRP conjugated as the detection antibody. Range: 0.391-25 ng/mL



Serum of thirteen individual healthy human donors was measured. The QSOX1/Quiescin Q6 concentration of detected samples was determined to be 26.07 ng/mL with a range of 7.70-126.24 ng/mL



Cytometric bead array standard curve of MP50971-1, QSOX1 Monoclonal Matched Antibody Pair, PBS Only. Capture antibody: 60676-1-PBS. Detection antibody: 60676-2-PBS. Standard: Ag17036. Range: 0.391-100 ng/mL