

For Research Use Only

# QSOX1 Monoclonal antibody, PBS Only (Capture)

Catalog Number:60676-1-PBS



## Basic Information

<b>Catalog Number:</b> 60676-1-PBS	<b>GenBank Accession Number:</b> BC017692	<b>Purification Method:</b> Protein G purification
<b>Size:</b> 100ug , Concentration: 1 mg/ml by Nanodrop;	<b>GeneID (NCBI):</b> 5768	<b>CloneNo.:</b> 1D12G10
<b>Source:</b> Mouse	<b>UNIPROT ID:</b> O00391	
<b>Isotype:</b> IgG1	<b>Full Name:</b> quiescin Q6 sulfhydryl oxidase 1	
<b>Immunogen Catalog Number:</b> AG17036	<b>Calculated MW:</b> 747 aa, 83 kDa	

## Applications

**Tested Applications:**  
Cytometric bead array, Sandwich ELISA, Indirect ELISA,  
Sample test

**Species Specificity:**  
human

## Product Information

60676-1-PBS targets QSOX1 as part of a matched antibody pair:

MP50971-1: 60676-1-PBS capture and 60676-2-PBS detection (validated in Cytometric bead array, Sandwich ELISA)

MP50971-2: 60676-1-PBS capture and 60676-3-PBS detection (validated in Cytometric bead array)

Unconjugated mouse monoclonal antibody pair in PBS only (BSA and azide free) storage buffer at a concentration of 1 mg/mL, ready for conjugation.

This conjugation ready format makes antibodies ideal for use in many applications including: ELISAs, multiplex assays requiring matched pairs, mass cytometry, and multiplex imaging applications. Antibody use should be optimized by the end user for each application and assay.

## Storage

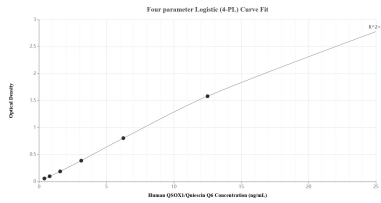
**Storage:**  
Store at -80°C.

**Storage Buffer:**  
PBS Only

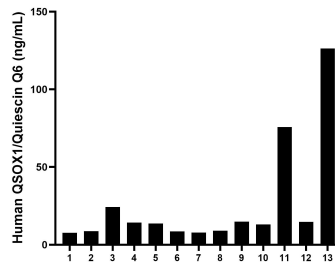
For technical support and original validation data for this product please contact:  
T: 1 (888) 4PTGLAB (1-888-478-4522) (toll free in USA), or 1(312) 455-8498 (outside USA)      E: proteintech@ptglab.com  
W: ptglab.com

This product is exclusively available under Proteintech Group brand and is not available to purchase from any other manufacturer.

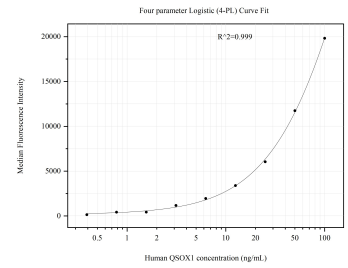
## Selected Validation Data



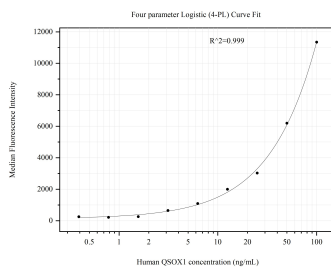
Sandwich ELISA standard curve of MP50971-1, Human QSOX1/Quiescin Q6 Monoclonal Matched Antibody Pair - PBS only. 60676-1-PBS was coated to a plate as the capture antibody and incubated with serial dilutions of standard Ag17036. 60676-2-PBS was HRP conjugated as the detection antibody. Range: 0.391-25 ng/mL



Serum of thirteen individual healthy human donors was measured. The QSOX1/Quiescin Q6 concentration of detected samples was determined to be 26.07 ng/mL with a range of 7.70-126.24 ng/mL



Cytometric bead array standard curve of MP50971-1, QSOX1 Monoclonal Matched Antibody Pair, PBS Only. Capture antibody: 60676-1-PBS. Detection antibody: 60676-2-PBS. Standard: Ag17036. Range: 0.391-100 ng/mL



Cytometric bead array standard curve of MP50971-2, QSOX1 Monoclonal Matched Antibody Pair, PBS Only. Capture antibody: 60676-1-PBS. Detection antibody: 60676-3-PBS. Standard: Ag17036. Range: 0.391-100 ng/mL