

For Research Use Only

MMP-9 Monoclonal antibody, PBS Only (Detector)

Catalog Number: 60600-2-PBS



Basic Information

Catalog Number:

60600-2-PBS

Size:

100ug, Concentration: 1 mg/ml by
Nanodrop;

Source:

Mouse

Isotype:

IgG1

GenBank Accession Number:

BC006093

GeneID (NCBI):

4318

UNIPROT ID:

P14780

Full Name:

matrix metalloproteinase 9
(gelatinase B, 92kDa gelatinase,
92kDa type IV collagenase)

Calculated MW:

707 aa, 78 kDa

Purification Method:

Protein G purification

CloneNo.:

1E5G7

Applications

Tested Applications:

Indirect ELISA, Sample test

Species Specificity:

human

Product Information

60600-2-PBS targets MMP-9 as part of a matched antibody pair:

MP51000-1: 60600-1-PBS capture and 60600-2-PBS detection (validated in Cytometric bead array)

Unconjugated mouse monoclonal antibody pair in PBS only (BSA and azide free) storage buffer at a concentration of 1 mg/mL, ready for conjugation.

This conjugation ready format makes antibodies ideal for use in many applications including: ELISAs, multiplex assays requiring matched pairs, mass cytometry, and multiplex imaging applications. Antibody use should be optimized by the end user for each application and assay.

Storage

Storage:

Store at -80°C.

Storage Buffer:

PBS Only

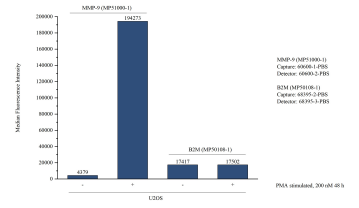
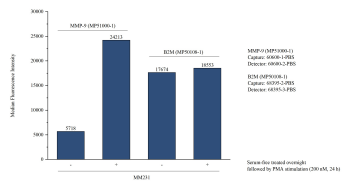
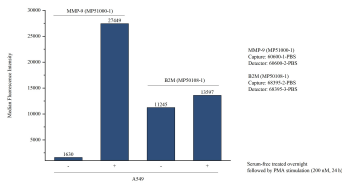
For technical support and original validation data for this product please contact:

T: 1 (888) 4PTGLAB (1-888-478-4522) (toll free
in USA), or 1(312) 455-8498 (outside USA)

E: proteintech@ptglab.com
W: ptglab.com

This product is exclusively available under Proteintech Group brand and is not available to purchase from any other manufacturer.

Selected Validation Data



Cytometric bead array of A549 cells supernatant using MP51000-1, MMP-9 Monoclonal Matched Antibody Pair, PBS Only. Capture antibody: 60600-1-PBS. Detection antibody: 60600-2-PBS. A549 cells were cultured in serum-free media overnight followed by PMA stimulation (200 nM, 24 h). 50 µL of the supernatant was analyzed using MP51000-1 (MMP-9 Monoclonal Matched Antibody Pair). Non-related target B2M Monoclonal Matched Antibody Pair



Cytometric bead array of MM231 cells supernatant using MP51000-1, MMP-9 Monoclonal Matched Antibody Pair, PBS Only. Capture antibody: 60600-1-PBS. Detection antibody: 60600-2-PBS. MM231 cells were cultured in serum-free media overnight followed by PMA stimulation (200 nM, 24 h). 50 µL of the supernatant was analyzed using MP51000-1 (MMP-9 Monoclonal Matched Antibody Pair). Non-related target B2M Monoclonal Matched



Cytometric bead array of U2OS cells supernatant using MP51000-1, MMP-9 Monoclonal Matched Antibody Pair, PBS Only. Capture antibody: 60600-1-PBS. Detection antibody: 60600-2-PBS. U2OS cells were cultured for 2 days in normal culture media or PMA (200nM, 48h) containing media. 50 µL of the supernatant was analyzed using MP51000-1 (MMP-9 Monoclonal Matched Antibody Pair). Non-related target B2M Monoclonal Matched

