

For Research Use Only

# MMP-9 Monoclonal antibody, PBS Only (Capture)

Catalog Number: 60600-1-PBS



## Basic Information

<b>Catalog Number:</b> 60600-1-PBS	<b>GenBank Accession Number:</b> BC006093	<b>Purification Method:</b> Protein G purification
<b>Size:</b> 100ug , Concentration: 1 mg/ml by Nanodrop;	<b>GeneID (NCBI):</b> 4318	<b>CloneNo.:</b> 3C3E2
<b>Source:</b> Mouse	<b>UNIPROT ID:</b> P14780	
<b>Isotype:</b> IgG1	<b>Full Name:</b> matrix metalloproteinase 9 (gelatinase B, 92kDa gelatinase, 92kDa type IV collagenase)	
	<b>Calculated MW:</b> 707 aa, 78 kDa	

## Applications

**Tested Applications:**  
Indirect ELISA, Sample test

**Species Specificity:**  
human

## Product Information

60600-1-PBS targets MMP-9 as part of a matched antibody pair:

MP51000-1: 60600-1-PBS capture and 60600-2-PBS detection (validated in Cytometric bead array)

Unconjugated mouse monoclonal antibody pair in PBS only (BSA and azide free) storage buffer at a concentration of 1 mg/mL, ready for conjugation.

This conjugation ready format makes antibodies ideal for use in many applications including: ELISAs, multiplex assays requiring matched pairs, mass cytometry, and multiplex imaging applications. Antibody use should be optimized by the end user for each application and assay.

## Storage

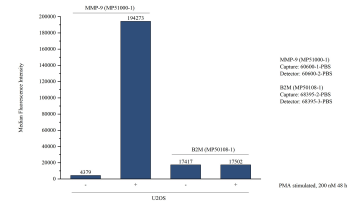
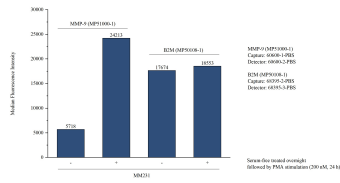
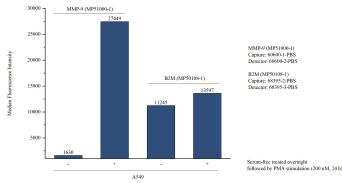
**Storage:**  
Store at -80°C.

**Storage Buffer:**  
PBS Only

For technical support and original validation data for this product please contact:  
T: 1 (888) 4PTGLAB (1-888-478-4522) (toll free in USA), or 1(312) 455-8498 (outside USA)      E: proteintech@ptglab.com  
W: ptglab.com

**This product is exclusively available under Proteintech Group brand and is not available to purchase from any other manufacturer.**

# Selected Validation Data



Cytometric bead array of A549 cells supernatant using MP51000-1, MMP-9 Monoclonal Matched Antibody Pair, PBS Only. Capture antibody: 60600-1-PBS. Detection antibody: 60600-2-PBS. A549 cells were cultured in serum-free media overnight followed by PMA stimulation (200 nM, 24 h). 50  $\mu$ L of the supernatant was analyzed using MP51000-1 (MMP-9 Monoclonal Matched Antibody Pair). Non-related target B2M Monoclonal Matched Antibody Pair



Cytometric bead array of MM231 cells supernatant using MP51000-1, MMP-9 Monoclonal Matched Antibody Pair, PBS Only. Capture antibody: 60600-1-PBS. Detection antibody: 60600-2-PBS. MM231 cells were cultured in serum-free media overnight followed by PMA stimulation (200 nM, 24 h). 50  $\mu$ L of the supernatant was analyzed using MP51000-1 (MMP-9 Monoclonal Matched Antibody Pair). Non-related target B2M Monoclonal Matched



Cytometric bead array of U2OS cells supernatant using MP51000-1, MMP-9 Monoclonal Matched Antibody Pair, PBS Only. Capture antibody: 60600-1-PBS. Detection antibody: 60600-2-PBS. U2OS cells were cultured for 2 days in normal culture media or PMA (200nM, 48h) containing media. 50  $\mu$ L of the supernatant was analyzed using MP51000-1 (MMP-9 Monoclonal Matched Antibody Pair). Non-related target B2M Monoclonal Matched

