

For Research Use Only

CEP120 Monoclonal antibody

Catalog Number: 60468-1-Ig



Basic Information

Catalog Number: 60468-1-Ig	GenBank Accession Number: BC040527	Purification Method: Protein A purification
Size: 150ul , Concentration: 1000 µg/ml by Nanodrop;	GeneID (NCBI): 153241	CloneNo.: 1G12B4
Source: Mouse	UNIPROT ID: Q8N960	Recommended Dilutions: WB 1:1000-1:4000
Isotype: IgG2a	Full Name: centrosomal protein 120kDa	
Immunogen Catalog Number: AG33947	Calculated MW: 986 aa, 113 kDa	
	Observed MW: 120 kDa	

Applications

Tested Applications: WB, ELISA	Positive Controls: WB : A549 cells, HepG2 cells, Jurkat cells, MOLT-4 cells, K-562 cells, IMR-32 cells
Species Specificity: human	

Background Information

CEP120 encodes a protein that functions in the microtubule-dependent coupling of the nucleus and the centrosome. It is involved in regulating centrosome-mediated interkinetic nuclear migration of neural progenitors (PMID: 27185865, 23857771). CEP120, SPICE1, and CPAP are required for centriole elongation and for the recruitment of distal microtubule-capping proteins and CEP135 to procentrioles (PMID: 23810536).

Storage

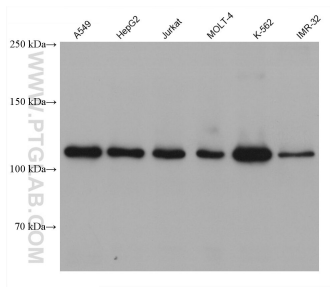
Storage:
Store at -20°C. Stable for one year after shipment.
Storage Buffer:
PBS with 0.02% sodium azide and 50% glycerol pH 7.3.
Aliquoting is unnecessary for -20°C storage

*** 20ul sizes contain 0.1% BSA

For technical support and original validation data for this product please contact:
T: 1 (888) 4PTGLAB (1-888-478-4522) (toll free in USA), or 1(312) 455-8498 (outside USA)
E: proteintech@ptglab.com
W: ptglab.com

This product is exclusively available under Proteintech Group brand and is not available to purchase from any other manufacturer.

Selected Validation Data



Various lysates were subjected to SDS PAGE followed by western blot with 60468-1-Ig (CEP120 antibody) at dilution of 1:2000 incubated at room temperature for 1.5 hours.