

For Research Use Only

ATAD1 Monoclonal antibody, PBS Only (Detector)

Catalog Number: 60442-2-PBS



Basic Information

Catalog Number: 60442-2-PBS	GenBank Accession Number: BC010868	Purification Method: Protein G purification
Size: 100ug, Concentration: 1 mg/ml by Nanodrop;	GeneID (NCBI): 84896	CloneNo.: 2A2C3
Source: Mouse	UNIPROT ID: Q8NBU5	
Isotype: IgG1	Full Name: ATPase family, AAA domain containing 1	
Immunogen Catalog Number: AG10471	Calculated MW: 361 aa, 41 kDa	
	Observed MW: 32-37 kDa	

Applications

Tested Applications:
WB, Cytometric bead array, Indirect ELISA

Species Specificity:
human, mouse, rat, rabbit

Product Information

60442-2-PBS targets ATAD1 as part of a matched antibody pair.

MP50598-1: 60442-1-PBS capture and 60442-2-PBS detection (validated in Cytometric bead array)

Unconjugated mouse monoclonal antibody pair in PBS only (BSA and azide free) storage buffer at a concentration of 1 mg/mL, ready for conjugation.

This conjugation ready format makes antibodies ideal for use in many applications including: ELISAs, multiplex assays requiring matched pairs, mass cytometry, and multiplex imaging applications. Antibody use should be optimized by the end user for each application and assay.

Background Information

The mitochondrial AAA (ATPase Associated with diverse cellular Activities) protein ATAD1 (in humans; Msp1 in yeast) removes mislocalized membrane proteins, as well as stuck import substrates from the mitochondrial outer membrane, facilitating their re-insertion into their cognate organelles and maintaining mitochondria's protein import capacity.

Storage

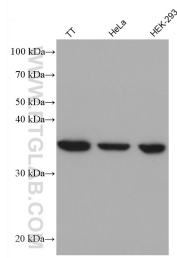
Storage:
Store at -80°C.

Storage Buffer:
PBS Only

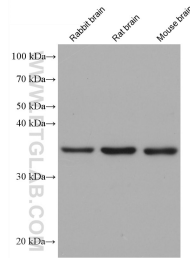
For technical support and original validation data for this product please contact:
T: 1 (888) 4PTGLAB (1-888-478-4522) (toll free in USA), or 1(312) 455-8498 (outside USA) E: proteintech@ptglab.com W: ptglab.com

This product is exclusively available under Proteintech Group brand and is not available to purchase from any other manufacturer.

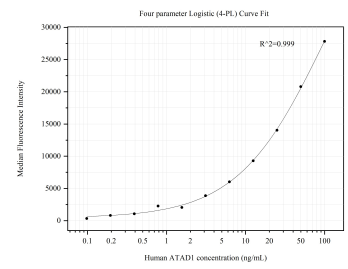
Selected Validation Data



Various lysates were subjected to SDS PAGE followed by western blot with 60442-2-Ig (ATAD1 antibody) at dilution of 1:10000 incubated at room temperature for 1.5 hours. This data was developed using the same antibody clone with 60442-2-PBS in a different storage buffer formulation.



Various lysates were subjected to SDS PAGE followed by western blot with 60442-2-Ig (ATAD1 antibody) at dilution of 1:10000 incubated at room temperature for 1.5 hours. This data was developed using the same antibody clone with 60442-2-PBS in a different storage buffer formulation.



Cytometric bead array standard curve of MP50598-1, ATAD1 Monoclonal Matched Antibody Pair, PBS Only. Capture antibody: 60442-1-PBS. Detection antibody: 60442-2-PBS. Standard: Ag10471. Range: 0.098-100 ng/mL.