

For Research Use Only

ATAD1 Monoclonal antibody

Catalog Number:60442-2-Ig



Basic Information

Catalog Number: 60442-2-Ig	GenBank Accession Number: BC010868	Purification Method: Protein G purification
Size: 150ul , Concentration: 1000 ug/ml by Nanodrop;	GeneID (NCBI): 84896	CloneNo.: 2A2C3
Source: Mouse	UNIPROT ID: Q8NBU5	Recommended Dilutions: WB 1:5000-1:50000
Isotype: IgG1	Full Name: ATPase family, AAA domain containing 1	
Immunogen Catalog Number: AG10471	Calculated MW: 361 aa, 41 kDa	
	Observed MW: 32-37 kDa	

Applications

Tested Applications:
WB, ELISA

Species Specificity:
human, mouse, rat, rabbit

Positive Controls:
WB : TT cells, rabbit brain tissue, HeLa cells, HEK-293 cells, rat brain tissue, mouse brain tissue

Background Information

The mitochondrial AAA (ATPase Associated with diverse cellular Activities) protein ATAD1 (in humans; Msp1 in yeast) removes mislocalized membrane proteins, as well as stuck import substrates from the mitochondrial outer membrane, facilitating their re-insertion into their cognate organelles and maintaining mitochondria's protein import capacity.

Storage

Storage:
Store at -20°C. Stable for one year after shipment.

Storage Buffer:
PBS with 0.02% sodium azide and 50% glycerol pH 7.3.

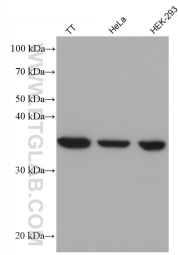
Aliquoting is unnecessary for -20°C storage

*** 20ul sizes contain 0.1% BSA

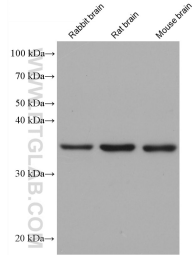
For technical support and original validation data for this product please contact:
T: 1 (888) 4PTGLAB (1-888-478-4522) (toll free in USA), or 1(312) 455-8498 (outside USA) E: proteintech@ptglab.com
W: ptglab.com

This product is exclusively available under Proteintech Group brand and is not available to purchase from any other manufacturer.

Selected Validation Data



Various lysates were subjected to SDS PAGE followed by western blot with 60442-2-Ig (ATAD1 antibody) at dilution of 1:10000 incubated at room temperature for 1.5 hours.



Various lysates were subjected to SDS PAGE followed by western blot with 60442-2-Ig (ATAD1 antibody) at dilution of 1:10000 incubated at room temperature for 1.5 hours.