

For Research Use Only

Prokineticin 1 Monoclonal antibody, PBS Only (Capture)

Catalog Number: 60417-1-PBS



Basic Information

Catalog Number: 60417-1-PBS	GenBank Accession Number: BC025399	Purification Method: Protein G Magarose purification
Size: 100ug , Concentration: 1 mg/ml by Nanodrop;	GeneID (NCBI): 84432	CloneNo.: 1E12G3
Source: Mouse	UNIPROT ID: P58294	
Isotype: IgG1	Full Name: prokineticin 1	
Immunogen Catalog Number: AG8079	Calculated MW: 12 kDa	

Applications

Tested Applications:
Cytometric bead array, Sandwich ELISA, Indirect ELISA,
Sample test

Species Specificity:
human

Product Information

60417-1-PBS targets Prokineticin 1 as part of a matched antibody pair:

MP50534-1: 60417-1-PBS capture and 60417-2-PBS detection (validated in Cytometric bead array)

MP50534-2: 60417-1-PBS capture and 60417-3-PBS detection (validated in Cytometric bead array, Sandwich ELISA)

MP50534-3: 60417-1-PBS capture and 60417-4-PBS detection (validated in Cytometric bead array)

Unconjugated mouse monoclonal antibody pair in PBS only (BSA and azide free) storage buffer at a concentration of 1 mg/mL, ready for conjugation.

This conjugation ready format makes antibodies ideal for use in many applications including: ELISAs, multiplex assays requiring matched pairs, mass cytometry, and multiplex imaging applications. Antibody use should be optimized by the end user for each application and assay.

Storage

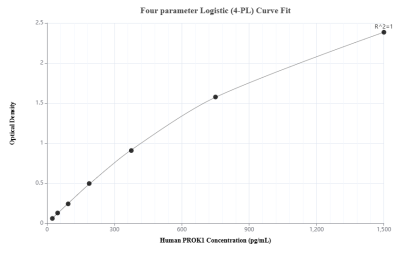
Storage:
Store at -80°C.

Storage Buffer:
PBS Only

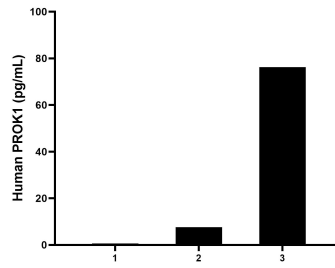
For technical support and original validation data for this product please contact:
T: 1 (888) 4PTGLAB (1-888-478-4522) (toll free in USA), or 1(312) 455-8498 (outside USA) E: proteintech@ptglab.com
W: ptglab.com

This product is exclusively available under Proteintech Group brand and is not available to purchase from any other manufacturer.

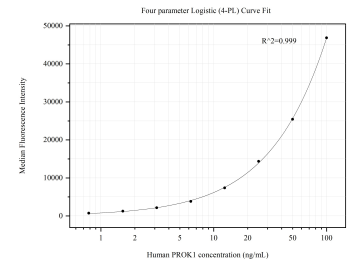
Selected Validation Data



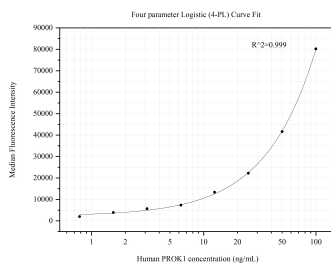
Sandwich ELISA standard curve of MP50534-2, Human PROK1 Monoclonal Matched Antibody Pair - PBS only. 60417-1-PBS was coated to a plate as the capture antibody and incubated with serial dilutions of standard Ag8079. 60417-3-PBS was HRP conjugated as the detection antibody. Range: 23.4-1500 pg/mL



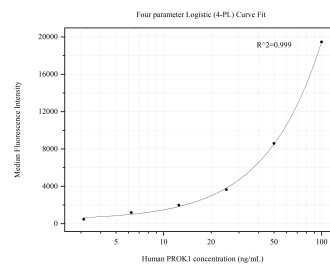
Serum of three individual healthy human donors was measured. The human PROK1 concentration of detected samples was determined to be 28.1 pg/mL with a range of 0.6-76.2 pg/mL



Cytometric bead array standard curve of MP50534-1, PROK1 Monoclonal Matched Antibody Pair, PBS Only. Capture antibody: 60417-1-PBS. Detection antibody: 60417-2-PBS. Standard:Ag8079. Range: 0.781-100 ng/mL



Cytometric bead array standard curve of MP50534-2, PROK1 Monoclonal Matched Antibody Pair, PBS Only. Capture antibody: 60417-1-PBS. Detection antibody: 60417-3-PBS. Standard:Ag8079. Range: 0.781-100 ng/mL



Cytometric bead array standard curve of MP50534-3, PROK1 Monoclonal Matched Antibody Pair, PBS Only. Capture antibody: 60417-1-PBS. Detection antibody: 60417-4-PBS. Standard:Ag8079. Range: 3.125-100 ng/mL