

For Research Use Only

# LMOD1 Monoclonal antibody, PBS Only

Catalog Number: 60414-1-PBS



## Basic Information

<b>Catalog Number:</b> 60414-1-PBS	<b>GenBank Accession Number:</b> BC001755	<b>Purification Method:</b> Protein G purification
<b>Size:</b> 100ug, Concentration: 1 mg/ml by Nanodrop;	<b>GeneID (NCBI):</b> 25802	<b>CloneNo.:</b> 1D6H2
<b>Source:</b> Mouse	<b>UNIPROT ID:</b> P29536	
<b>Isotype:</b> IgG1	<b>Full Name:</b> leiomodoin 1 (smooth muscle)	
<b>Immunogen Catalog Number:</b> AG7568	<b>Calculated MW:</b> 67 kDa	
	<b>Observed MW:</b> 75 kDa	

## Applications

**Tested Applications:**  
WB, IHC, IF-P, Indirect ELISA

**Species Specificity:**  
human, mouse, rat, pig, rabbit

## Background Information

LMOD1 was initially identified as a 64-kDa autoantigen in an expression screen with sera from patients with Hashimoto's thyroiditis. Recently immunohistochemistry and immunoblotting of LMOD1 demonstrated its highly restrictive pattern of expression in SMC lineages, like adult aorta, and bladder. LMOD1 is also shown to exhibit an embryonic and adult expression pattern. These data identify LMOD1 as a new SMC-restricted gene associated with the SMC differentiated phenotype.

## Storage

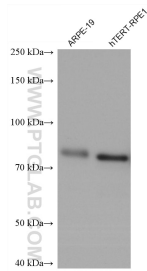
**Storage:**  
Store at -80°C.

**Storage Buffer:**  
PBS Only

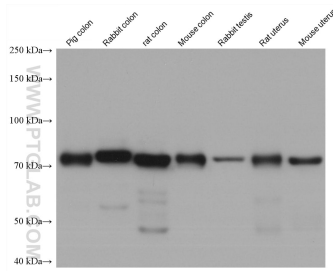
For technical support and original validation data for this product please contact:  
T: 1 (888) 4PTGLAB (1-888-478-4522) (toll free in USA), or 1(312) 455-8498 (outside USA)      E: proteintech@ptglab.com  
W: ptglab.com

This product is exclusively available under Proteintech Group brand and is not available to purchase from any other manufacturer.

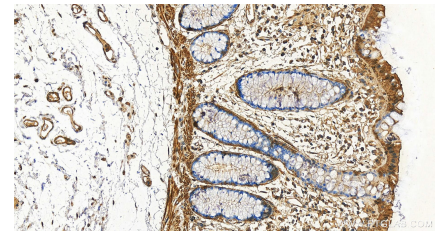
## Selected Validation Data



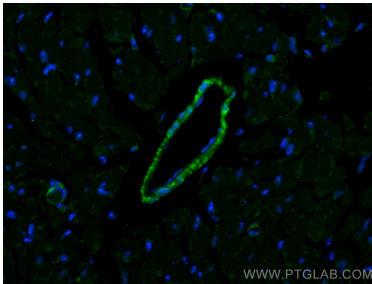
Various lysates were subjected to SDS PAGE followed by western blot with 60414-1-Ig (LMOD1 antibody) at dilution of 1:20000 incubated at room temperature for 1.5 hours. This data was developed using the same antibody clone with 60414-1-PBS in a different storage buffer formulation.



Various lysates were subjected to SDS PAGE followed by western blot with 60414-1-Ig (LMOD1 antibody) at dilution of 1:20000 incubated at room temperature for 1.5 hours. This data was developed using the same antibody clone with 60414-1-PBS in a different storage buffer formulation.



Immunohistochemical analysis of paraffin-embedded human colon tissue slide using 60414-1-Ig (LMOD1 antibody) at dilution of 1:1000 (under 20x lens). Heat mediated antigen retrieval with Tris-EDTA buffer (pH 9.0). This data was developed using the same antibody clone with 60414-1-PBS in a different storage buffer formulation.



Immunofluorescent analysis of (4% PFA) fixed paraffin-embedded mouse heart tissue using LMOD1 antibody (60414-1-Ig, Clone: 1D6H2) at dilution of 1:2000 and Coralite®488-Conjugated Goat Anti-Mouse IgG(H+L) (SA00013-1). Heat mediated antigen retrieval with Tris-EDTA buffer (pH 9.0). This data was developed using the same antibody clone with 60414-1-PBS in a different storage buffer formulation.