

For Research Use Only

# Myocilin Monoclonal antibody, PBS Only



Catalog Number: 60357-1-PBS

## Basic Information

<b>Catalog Number:</b> 60357-1-PBS	<b>GenBank Accession Number:</b> BC029261	<b>Purification Method:</b> Protein A purification
<b>Size:</b> 100ug , Concentration: 1 mg/ml by Nanodrop;	<b>GeneID (NCBI):</b> 4653	<b>CloneNo.:</b> 4B1F6
<b>Source:</b> Mouse	<b>UNIPROT ID:</b> Q99972	
<b>Isotype:</b> IgG2a	<b>Full Name:</b> myocilin, trabecular meshwork inducible glucocorticoid response	
<b>Immunogen Catalog Number:</b> AG5492	<b>Calculated MW:</b> 57 kDa	
	<b>Observed MW:</b> 50-57 kDa	

## Applications

**Tested Applications:**  
WB, IHC, Indirect ELISA

**Species Specificity:**  
human, mouse, pig, rat

## Background Information

Myocilin (MYOC), also known as TIGR or GLC1A, is a secreted glycoprotein of the olfactomedin family, originally identified in trabecular meshwork cells after prolonged treatment with glucocorticoids, and, independently, in the retina (PMID: 9176893; 9169133). It may participate in the obstruction of fluid outflow in the trabecular meshwork. Defects in MYOC are the cause of primary open angle glaucoma (POAG) (PMID: 21709622).

## Storage

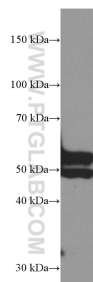
**Storage:**  
Store at -80°C.

**Storage Buffer:**  
PBS Only

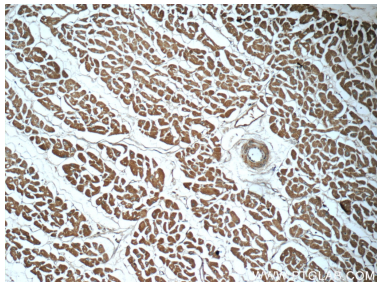
For technical support and original validation data for this product please contact:  
T: 1 (888) 4PTGLAB (1-888-478-4522) (toll free in USA), or 1(312) 455-8498 (outside USA)  
E: [proteintech@ptglab.com](mailto:proteintech@ptglab.com)  
W: [ptglab.com](http://ptglab.com)

This product is exclusively available under Proteintech Group brand and is not available to purchase from any other manufacturer.

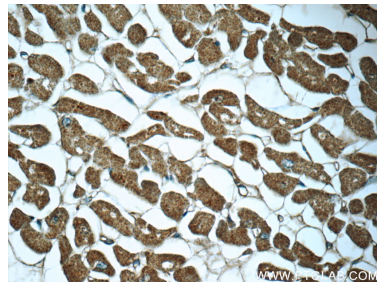
## Selected Validation Data



pig heart tissue were subjected to SDS PAGE followed by western blot with 60357-1-Ig (Myocilin antibody) at dilution of 1:4000 incubated at room temperature for 1.5 hours. This data was developed using the same antibody clone with 60357-1-PBS in a different storage buffer formulation.



Immunohistochemical analysis of paraffin-embedded human heart tissue slide using 60357-1-Ig (Myocilin antibody) at dilution of 1:50 (under 10x lens). This data was developed using the same antibody clone with 60357-1-PBS in a different storage buffer formulation.



Immunohistochemical analysis of paraffin-embedded human heart tissue slide using 60357-1-Ig (Myocilin antibody) at dilution of 1:50 (under 40x lens). This data was developed using the same antibody clone with 60357-1-PBS in a different storage buffer formulation.