

For Research Use Only

Inhibin beta A-Specific Monoclonal antibody, PBS Only



Catalog Number: 60352-1-PBS

Basic Information

Catalog Number: 60352-1-PBS	GenBank Accession Number: NM_002192	Purification Method: Protein A purification
Size: 100ug, Concentration: 1 mg/ml by Nanodrop;	GeneID (NCBI): 3624	CloneNo.: 1F8D8
Source: Mouse	UNIPROT ID: P08476	
Isotype: IgG1	Full Name: inhibin, beta A	
	Calculated MW: 47 kDa	
	Observed MW: 47 kDa	

Applications

Tested Applications:
WB, IHC, Indirect ELISA

Species Specificity:
human, pig

Background Information

Inhibin β A (INHBA) is a ligand in the transforming growth factor β (TGF- β) superfamily. Inhibin β A forms a disulfide-linked homo-dimer known as activin A, which has been implicated in multiple biologic processes, including neoplastic progression. The inhibin β A can also bind the β B and α isoforms to form activin AB and inhibin, respectively.

Storage

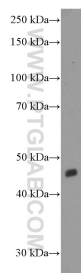
Storage:
Store at -80°C.

Storage Buffer:
PBS Only

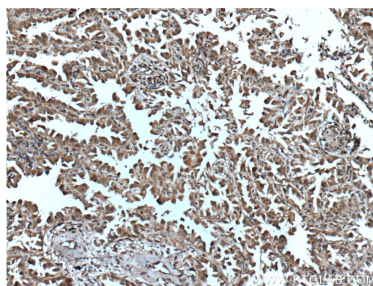
For technical support and original validation data for this product please contact:
T: 1 (888) 4PTGLAB (1-888-478-4522) (toll free in USA), or 1(312) 455-8498 (outside USA) E: proteintech@ptglab.com
W: ptglab.com

This product is exclusively available under Proteintech Group brand and is not available to purchase from any other manufacturer.

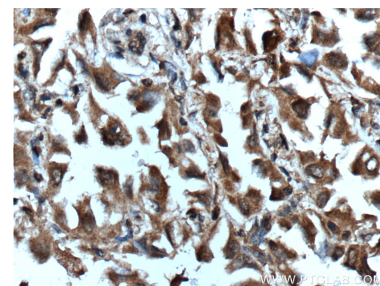
Selected Validation Data



HepG2 cells were subjected to SDS PAGE followed by western blot with 60352-1-Ig (INHBA-Specific Antibody) at dilution of 1:1000 incubated at room temperature for 1.5 hours. This data was developed using the same antibody clone with 60352-1-PBS in a different storage buffer formulation.



Immunohistochemical analysis of paraffin-embedded human lung cancer tissue slide using 60352-1-Ig (INHBA-Specific Antibody) at dilution of 1:200 (under 10x lens). Heat mediated antigen retrieval with Tris-EDTA buffer (pH 9.0). This data was developed using the same antibody clone with 60352-1-PBS in a different storage buffer formulation.



Immunohistochemical analysis of paraffin-embedded human lung cancer tissue slide using 60352-1-Ig (INHBA-Specific Antibody) at dilution of 1:150 (under 40x lens). Heat mediated antigen retrieval with Tris-EDTA buffer (pH 9.0). This data was developed using the same antibody clone with 60352-1-PBS in a different storage buffer formulation.