

For Research Use Only

# Prostein Monoclonal antibody, PBS Only

Catalog Number: 60343-1-PBS



## Basic Information

<b>Catalog Number:</b> 60343-1-PBS	<b>GenBank Accession Number:</b> BC050416	<b>Purification Method:</b> Protein A purification
<b>Size:</b> 100ug , Concentration: 1mg/ml by Nanodrop;	<b>GeneID (NCBI):</b> 85414	<b>CloneNo.:</b> 5E12E2
<b>Source:</b> Mouse	<b>UNIPROT ID:</b> Q96JT2	
<b>Isotype:</b> IgG2b	<b>Full Name:</b> solute carrier family 45, member 3	
<b>Immunogen Catalog Number:</b> AG5463	<b>Calculated MW:</b> 59 kDa	
	<b>Observed MW:</b> 55-59 kDa	

## Applications

**Tested Applications:**  
WB, IHC, IF-P, Indirect ELISA

**Species Specificity:**  
human, mouse, rat

## Background Information

Prostein is a prostate tissue-specific protein whose expression is highly restricted to normal and cancerous prostate tissues. Anti-prostein is useful for the identification of prostate adenocarcinomas and is a good marker to identify prostatic origin in metastatic cancer.

## Storage

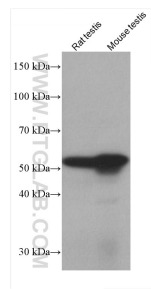
**Storage:**  
Store at -80°C.

**Storage Buffer:**  
PBS Only

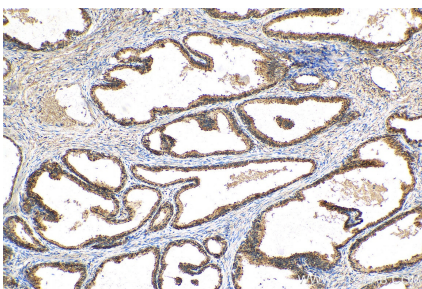
For technical support and original validation data for this product please contact:  
T: 1 (888) 4PTGLAB (1-888-478-4522) (toll free in USA), or 1(312) 455-8498 (outside USA)  
E: [proteintech@ptglab.com](mailto:proteintech@ptglab.com)  
W: [ptglab.com](http://ptglab.com)

This product is exclusively available under Proteintech Group brand and is not available to purchase from any other manufacturer.

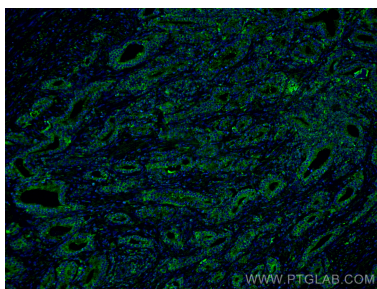
Selected Validation Data



Various lysates were subjected to SDS PAGE followed by western blot with 60343-1-Ig (Prostein antibody) at dilution of 1:10000 incubated at room temperature for 1.5 hours. This data was developed using the same antibody clone with 60343-1-PBS in a different storage buffer formulation.



Immunohistochemical analysis of paraffin-embedded human prostate cancer tissue slide using 60343-1-Ig (Prostein antibody) at dilution of 1:1000 (under 10x lens). Heat mediated antigen retrieval with Tris-EDTA buffer (pH 9.0). This data was developed using the same antibody clone with 60343-1-PBS in a different storage buffer formulation.



Immunofluorescent analysis of (4% PFA) fixed human prostate cancer tissue using Prostein antibody (60343-1-Ig, Clone: 5E12E2 ) at dilution of 1:400 and CoraLite®488-Conjugated AffiniPure Goat Anti-Mouse IgG(H+L). This data was developed using the same antibody clone with 60343-1-PBS in a different storage buffer formulation.



Immunohistochemical analysis of paraffin-embedded human prostate cancer tissue slide using 60343-1-Ig (Prostein antibody) at dilution of 1:2000 (under 40x lens). Heat mediated antigen retrieval with Tris-EDTA buffer (pH 9.0). This data was developed using the same antibody clone with 60343-1-PBS in a different storage buffer formulation.