

For Research Use Only

# Prostein Monoclonal antibody

Catalog Number: 60343-1-Ig



## Basic Information

<b>Catalog Number:</b> 60343-1-Ig	<b>GenBank Accession Number:</b> BC050416	<b>Purification Method:</b> Protein A purification
<b>Size:</b> 150ul , Concentration: 2600 µg/ml by Nanodrop and 1467 µg/ml by Bradford method using BSA as the standard;	<b>GeneID (NCBI):</b> 85414	<b>CloneNo.:</b> 5E12E2
<b>Source:</b> Mouse	<b>UNIPROT ID:</b> Q96JT2	<b>Recommended Dilutions:</b> WB 1:1000-1:10000 IHC 1:500-1:2000 IF 1:200-1:800
<b>Isotype:</b> IgG2b	<b>Full Name:</b> solute carrier family 45, member 3	
<b>Immunogen Catalog Number:</b> AG5463	<b>Calculated MW:</b> 59 kDa	
	<b>Observed MW:</b> 55-59 kDa	

## Applications

### Tested Applications:

IF, IHC, WB, ELISA

### Species Specificity:

human, mouse, rat

**Note-IHC: suggested antigen retrieval with TE buffer pH 9.0; (\*) Alternatively, antigen retrieval may be performed with citrate buffer pH 6.0**

### Positive Controls:

**WB :** rat testis tissue, DU 145 cells, JAR cells, mouse testis

**IHC :** human prostate cancer tissue,

**IF :** human prostate cancer tissue,

## Background Information

Prostein is a prostate tissue-specific protein whose expression is highly restricted to normal and cancerous prostate tissues. Anti-prostein is useful for the identification of prostate adenocarcinomas and is a good marker to identify prostatic origin in metastatic cancer.

## Storage

### Storage:

Store at -20°C. Stable for one year after shipment.

### Storage Buffer:

PBS with 0.02% sodium azide and 50% glycerol pH 7.3.

Aliquoting is unnecessary for -20°C storage

**\*\*\* 20ul sizes contain 0.1% BSA**

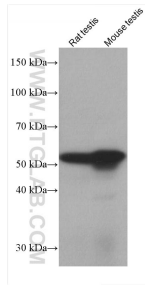
For technical support and original validation data for this product please contact:

T: 1 (888) 4PTGLAB (1-888-478-4522) (toll free in USA), or 1(312) 455-8498 (outside USA)

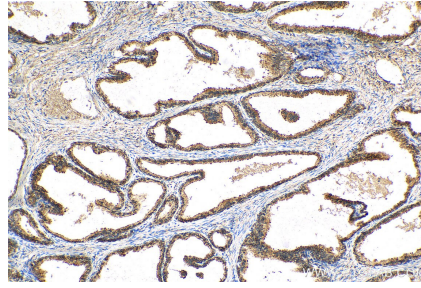
E: [proteintech@ptglab.com](mailto:proteintech@ptglab.com)  
W: [ptglab.com](http://ptglab.com)

**This product is exclusively available under Proteintech Group brand and is not available to purchase from any other manufacturer.**

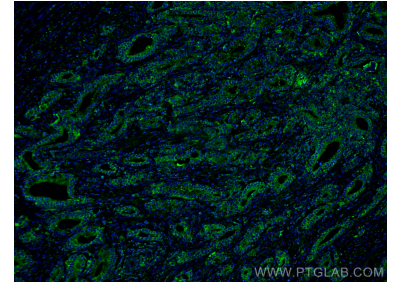
## Selected Validation Data



Various lysates were subjected to SDS PAGE followed by western blot with 60343-1-Ig (Prostein antibody) at dilution of 1:10000 incubated at room temperature for 1.5 hours.



Immunohistochemical analysis of paraffin-embedded human prostate cancer tissue slide using 60343-1-Ig (Prostein antibody) at dilution of 1:1000 (under 10x lens). Heat mediated antigen retrieval with Tris-EDTA buffer (pH 9.0).



Immunofluorescent analysis of (4% PFA) fixed human prostate cancer tissue using Prostein antibody (60343-1-Ig, Clone: 5E12E2) at dilution of 1:400 and Coralite®488-Conjugated AffiniPure Goat Anti-Mouse IgG(H+L).