

For Research Use Only

p63 Monoclonal antibody, PBS Only (Detector)

Catalog Number: 60332-4-PBS



Basic Information

Catalog Number:

60332-4-PBS

Size:

100ug, Concentration: 1 mg/ml by Nanodrop;

Source:

Mouse

Isotype:

IgG1

Immunogen Catalog Number:

AG2791

GenBank Accession Number:

BC039815

GeneID (NCBI):

8626

UNIPROT ID:

Q9H3D4

Full Name:

tumor protein p63

Calculated MW:

680 aa, 77 kDa

Purification Method:

Protein G Magarose purification

CloneNo.:

1H10H7

Applications

Tested Applications:

IF/ICC, Cytometric bead array, Sandwich ELISA, Indirect ELISA, Sample test

Species Specificity:

human

Product Information

60332-4-PBS targets p63 as part of a matched antibody pair:

MP50229-1: 60332-3-PBS capture and 60332-4-PBS detection (validated in Cytometric bead array, Sandwich ELISA)

Unconjugated mouse monoclonal antibody pair in PBS only (BSA and azide free) storage buffer at a concentration of 1 mg/mL, ready for conjugation.

This conjugation ready format makes antibodies ideal for use in many applications including: ELISAs, multiplex assays requiring matched pairs, mass cytometry, and multiplex imaging applications. Antibody use should be optimized by the end user for each application and assay.

Storage

Storage:

Store at -80°C.

Storage Buffer:

PBS Only

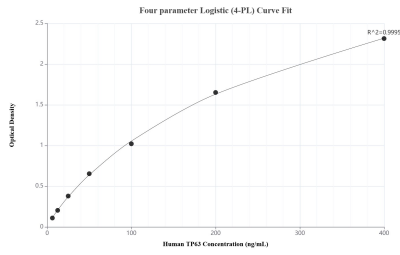
For technical support and original validation data for this product please contact:

T: 1 (888) 4PTGLAB (1-888-478-4522) (toll free in USA), or 1(312) 455-8498 (outside USA)

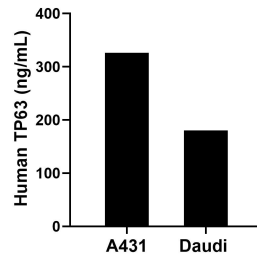
E: proteintech@ptglab.com
W: ptglab.com

This product is exclusively available under Proteintech Group brand and is not available to purchase from any other manufacturer.

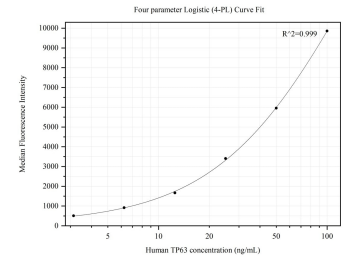
Selected Validation Data



Sandwich ELISA standard curve of MP50229-1, Human TP63 Monoclonal Matched Antibody Pair - PBS only. 60332-3-PBS was coated to a plate as the capture antibody and incubated with serial dilutions of standard Ag2791. 60332-4-PBS was HRP conjugated as the detection antibody. Range: 6.25-400 ng/mL



The mean TP63 concentration was determined to be 326.00 ng/mL in A431 cell extract based on a 1.50 mg/mL extract load and 180.00 ng/mL in Daudi cell extract based on a 1.80 mg/mL extract load.



Cytometric bead array standard curve of MP50229-1, TP63 Monoclonal Matched Antibody Pair, PBS Only. Capture antibody: 60332-3-PBS. Detection antibody: 60332-4-PBS. Standard: Ag2791. Range: 3.125-100 ng/mL