

For Research Use Only

Vimentin Monoclonal antibody, PBS Only (Capture)

Catalog Number: 60330-2-PBS



Basic Information

Catalog Number: 60330-2-PBS	GenBank Accession Number: BC000163	Purification Method: Protein G purification
Size: 100ug , Concentration: 1 mg/ml by Nanodrop;	GeneID (NCBI): 7431	CloneNo.: 1F9D8
Source: Mouse	ENSEMBL Gene ID: ENSG00000026025	
Isotype: IgG1	UNIPROT ID: P08670	
Immunogen Catalog Number: AG0489	Full Name: vimentin	
	Calculated MW: 466 aa, 54 kDa	

Applications

Tested Applications:
Cytometric bead array, Sandwich ELISA, Indirect ELISA, Sample test

Species Specificity:
human

Product Information

60330-2-PBS targets Vimentin as part of a matched antibody pair:

MP50158-1: 60330-2-PBS capture and 60330-1-PBS detection (validated in Cytometric bead array, Sandwich ELISA)

Unconjugated mouse monoclonal antibody pair in PBS only (BSA and azide free) storage buffer at a concentration of 1 mg/mL, ready for conjugation.

This conjugation ready format makes antibodies ideal for use in many applications including: ELISAs, multiplex assays requiring matched pairs, mass cytometry, and multiplex imaging applications. Antibody use should be optimized by the end user for each application and assay.

Storage

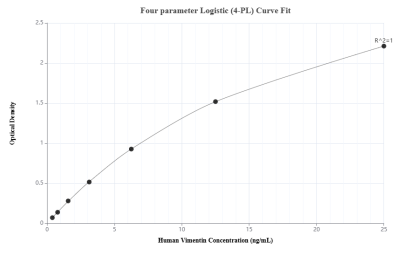
Storage:
Store at -80°C.

Storage Buffer:
PBS Only

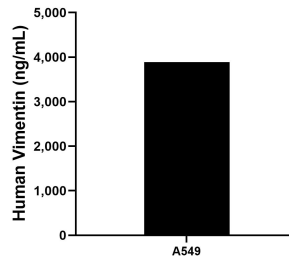
For technical support and original validation data for this product please contact:
T: 1 (888) 4PTGLAB (1-888-478-4522) (toll free in USA), or 1(312) 455-8498 (outside USA) E: proteintech@ptglab.com W: ptglab.com

This product is exclusively available under Proteintech Group brand and is not available to purchase from any other manufacturer.

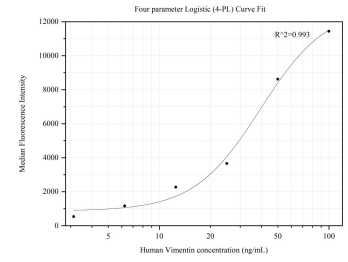
Selected Validation Data



Sandwich ELISA standard curve of MP50158-1, Human Vimentin Monoclonal Matched Antibody Pair - PBS only. 60330-2-PBS was coated to a plate as the capture antibody and incubated with serial dilutions of standard Ag0489. 60330-1-PBS was HRP conjugated as the detection antibody. Range: 0.391-25 ng/mL



The mean Vimentin concentration was determined to be 3,886.65 ng/mL in A549 cell extract based on a 2.6 mg/mL extract load.



Cytometric bead array standard curve of MP50158-1, Vimentin Monoclonal Matched Antibody Pair, PBS Only. Capture antibody: 60330-2-PBS. Detection antibody: 60330-1-PBS. Standard: Ag0489. Range: 3.125-100 ng/mL