

For Research Use Only

# FGFR1 Monoclonal antibody, PBS Only (Detector)

Catalog Number: 60325-1-PBS



## Basic Information

<b>Catalog Number:</b> 60325-1-PBS	<b>GenBank Accession Number:</b> BC018128	<b>Purification Method:</b> Protein A purification
<b>Size:</b> 100ug, Concentration: 1mg/ml by Nanodrop;	<b>GeneID (NCBI):</b> 2260	<b>CloneNo.:</b> 10F12E7
<b>Source:</b> Mouse	<b>UNIPROT ID:</b> P11362	
<b>Isotype:</b> IgG2c	<b>Full Name:</b> fibroblast growth factor receptor 1	
<b>Immunogen Catalog Number:</b> AG3646	<b>Calculated MW:</b> 820 aa, 91 kDa	
	<b>Observed MW:</b> 91 kDa	

## Applications

**Tested Applications:**  
WB, IHC, IF/ICC, FC (Intra), Cytometric bead array, Indirect ELISA

**Species Specificity:**  
human

## Product Information

60325-1-PBS targets FGFR1 as part of a matched antibody pair:

MP50453-3: 68982-1-PBS capture and 60325-1-PBS detection (validated in Cytometric bead array)

Unconjugated mouse monoclonal antibody pair in PBS only (BSA and azide free) storage buffer at a concentration of 1 mg/mL, ready for conjugation.

This conjugation ready format makes antibodies ideal for use in many applications including: ELISAs, multiplex assays requiring matched pairs, mass cytometry, and multiplex imaging applications. Antibody use should be optimized by the end user for each application and assay.

## Background Information

Fibroblast growth factor receptor 1 (FGFR1) is a tyrosine-protein kinase that acts as a cell-surface receptor for fibroblast growth factors. FGFR1 has been implicated in diverse biological processes including embryonic development, cell proliferation, differentiation, migration, and tumorigenesis. Mutations in the FGFR1 gene have been associated with Pfeiffer syndrome, Jackson-Weiss syndrome, Antley-Bixler syndrome, osteoglyphonic dysplasia, squamous cell lung cancer, and autosomal dominant Kallmann syndrome. Alternatively spliced variants that encode different protein isoforms have been described.

## Storage

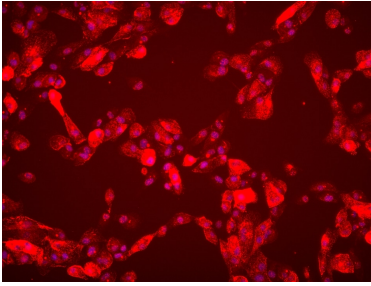
**Storage:**  
Store at -80°C.

**Storage Buffer:**  
PBS Only

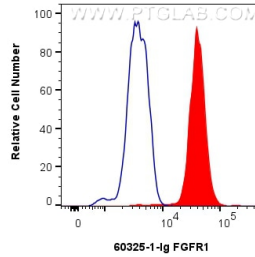
For technical support and original validation data for this product please contact:  
T: 1 (888) 4PTGLAB (1-888-478-4522) (toll free in USA), or 1(312) 455-8498 (outside USA)      E: proteintech@ptglab.com  
W: ptglab.com

**This product is exclusively available under Proteintech Group brand and is not available to purchase from any other manufacturer.**

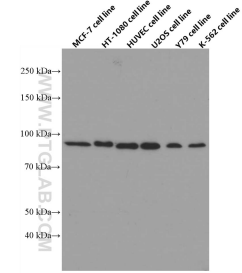
## Selected Validation Data



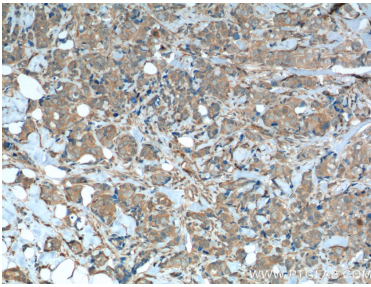
Immunofluorescent analysis of (4% PFA) fixed ACHN cells using FGFR1 antibody (60325-1-Ig, Clone: 10F12E7) at dilution of 1:1000 and Multi-rAb CoraLite® Plus 594-Goat Anti-Mouse Recombinant Secondary Antibody (H+L) (Cat.NO. RGAM004). This data was developed using the same antibody clone with 60325-1-PBS in a different storage buffer formulation.



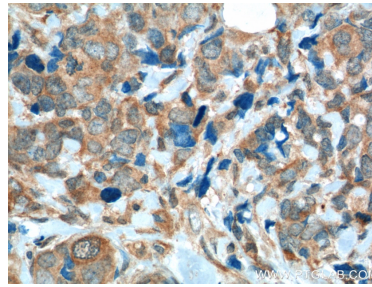
$1 \times 10^6$  K-562 cells were intracellularly stained with 0.2 ug FGFR1 Monoclonal antibody (60325-1-Ig, Clone:10F12E7) and CoraLite® 488-Conjugated Goat Anti-Mouse IgG(H+L) (SA00013-1)(red), or 0.2 ug Control Antibody (blue). Cells were fixed with 4% PFA and permeabilized with Flow Cytometry Perm Buffer (PF00011-C). This data was developed using the same antibody clone with 60325-1-PBS in a different storage buffer formulation.



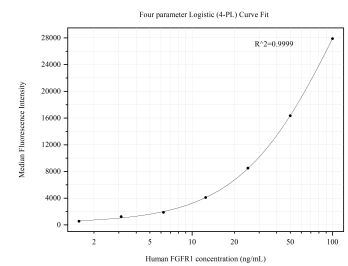
MCF-7, HT-1080, HUVEC, U2OS, Y79, and K-562 cells were subjected to SDS PAGE followed by western blot with 60325-1-Ig (FGFR1 antibody) at dilution of 1:3000 incubated at room temperature for 1.5 hours. This data was developed using the same antibody clone with 60325-1-PBS in a different storage buffer formulation.



Immunohistochemical analysis of paraffin-embedded human breast cancer tissue slide using 60325-1-Ig (FGFR1 Antibody) at dilution of 1:200 (under 10x lens). Heat mediated antigen retrieval with Tris-EDTA buffer (pH 9.0). This data was developed using the same antibody clone with 60325-1-PBS in a different storage buffer formulation.



Immunohistochemical analysis of paraffin-embedded human breast cancer tissue slide using 60325-1-Ig (FGFR1 Antibody) at dilution of 1:200 (under 40x lens). Heat mediated antigen retrieval with Tris-EDTA buffer (pH 9.0). This data was developed using the same antibody clone with 60325-1-PBS in a different storage buffer formulation.



Cytometric bead array standard curve of MP50453-3, FGFR1 Monoclonal Matched Antibody Pair, PBS Only. Capture antibody: 68982-1-PBS. Detection antibody: 60325-1-PBS. Standard: Ag31801. Range: 1.563-100 ng/mL.