

For Research Use Only

Cytokeratin 14 Monoclonal antibody, PBS Only

Catalog Number: 60320-1-PBS

Featured Product



Basic Information

Catalog Number:

60320-1-PBS

Size:

100ug, Concentration: 1mg/ml by
Nanodrop;

Source:

Mouse

Isotype:

IgG1

Immunogen Catalog Number:

AG17559

GenBank Accession Number:

BC002690

GeneID (NCBI):

3861

UNIPROT ID:

P02533

Full Name:

keratin 14

Calculated MW:

472 aa, 52 kDa

Observed MW:

52 kDa

Purification Method:

Protein G purification

CloneNo.:

2G1E2

Applications

Tested Applications:

WB, IHC, IF-P, ELISA

Species Specificity:

human, mouse, rat, pig

Background Information

Keratins are a large family of proteins that form the intermediate filament cytoskeleton of epithelial cells, which are classified into two major sequence types. Type I keratins are a group of acidic intermediate filament proteins, including K9-K23, and the hair keratins Ha1-Ha8. Type II keratins are the basic or neutral counterparts to the acidic type I keratins, including K1-K8, and the hair keratins, Hb1-Hb6. Keratin 14 is a type I cytokeratin. It is usually found as a heterotetramer with keratin 5. Keratins K14 and K5 have long been considered to be biochemical markers of the stratified squamous epithelia, including epidermis.

Storage

Storage:

Store at -80°C.

Storage Buffer:

PBS Only

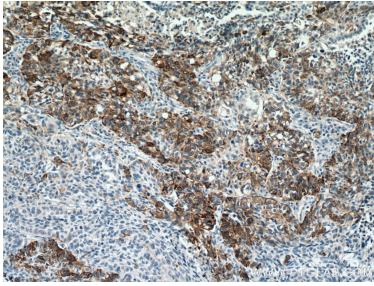
For technical support and original validation data for this product please contact:

T: 1 (888) 4PTGLAB (1-888-478-4522) (toll free
in USA), or 1(312) 455-8498 (outside USA)

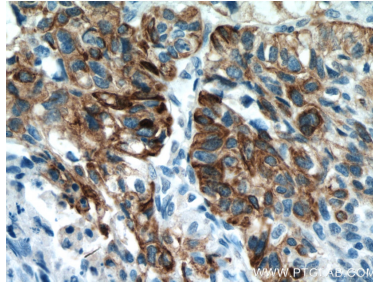
E: proteintech@ptglab.com
W: ptglab.com

This product is exclusively available under Proteintech Group brand and is not available to purchase from any other manufacturer.

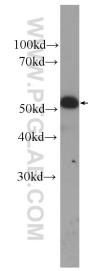
Selected Validation Data



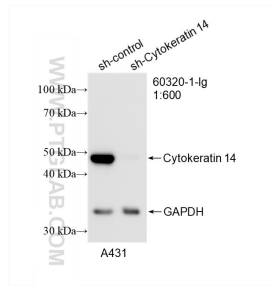
Immunohistochemical analysis of paraffin-embedded human lung cancer tissue slide using 60320-1-Ig (Cytokeratin 14 antibody) at dilution of 1:800 (under 10x lens). Heat mediated antigen retrieval with Tris-EDTA buffer (pH 9.0). This data was developed using the same antibody clone with 60320-1-PBS in a different storage buffer formulation.



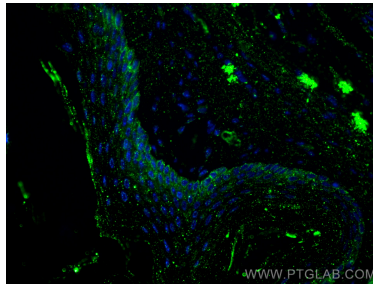
Immunohistochemical analysis of paraffin-embedded human lung cancer tissue slide using 60320-1-Ig (Cytokeratin 14 antibody) at dilution of 1:800 (under 40x lens). Heat mediated antigen retrieval with Tris-EDTA buffer (pH 9.0). This data was developed using the same antibody clone with 60320-1-PBS in a different storage buffer formulation.



A431 cells were subjected to SDS PAGE followed by western blot with 60320-1-Ig (Cytokeratin 14 antibody) at dilution of 1:500 incubated at room temperature for 1.5 hours. This data was developed using the same antibody clone with 60320-1-PBS in a different storage buffer formulation.



WB result of Cytokeratin 14 antibody (60320-1-Ig; 1:600; incubated at room temperature for 1.5 hours) with sh-Control and sh-Cytokeratin 14 transfected A431 cells. This data was developed using the same antibody clone with 60320-1-PBS in a different storage buffer formulation.



Immunofluorescent analysis of (4% PFA) fixed paraffin-embedded mouse skin tissue using Cytokeratin 14 antibody (60320-1-Ig, Clone: 2G1E2) at dilution of 1:400 and Multi-rAb CoraLite® Plus 488-Goat Anti-Mouse Recombinant Secondary Antibody (H+L) (RGAM002). Heat mediated antigen retrieval with Tris-EDTA buffer (pH 9.0). This data was developed using the same antibody clone with 60320-1-PBS in a different storage buffer formulation.