

For Research Use Only

CREST Monoclonal antibody, PBS Only



Catalog Number: 60314-1-PBS

Basic Information

Catalog Number: 60314-1-PBS	GenBank Accession Number: BC034494	Purification Method: Protein G purification
Size: 100ug , Concentration: 1 mg/ml by Nanodrop;	GeneID (NCBI): 26039	CloneNo.: 3D5D10
Source: Mouse	UNIPROT ID: O75177	
Isotype: IgG1	Full Name: synovial sarcoma translocation gene on chromosome 18-like 1	
Immunogen Catalog Number: AG3119	Calculated MW: 396 aa, 43 kDa	
	Observed MW: 50 kDa	

Applications

Tested Applications:
WB, Indirect ELISA

Species Specificity:
human, rat, mouse

Background Information

SS18-like 1(SS18L1) is a transcriptional activator that is required for calcium-dependent dendritic growth and branching in cortical neurons. It's also a nuclear protein interacts with CREB-binding protein and expressed in the developing brain. It helps regulate neuronal morphogenesis in calcium-dependent manner. The N-terminal domain of SS18L1 is required for suppressing transactivation in the basal state, while the C-terminal domain is required for calcium-induced transactivation. It's part of the CREST-BRG1 complex, a multiprotein complex that regulates promoter activation by orchestrating a calcium-dependent release of a repressor complex and a recruitment of an activator complex. This complex also binds to the NR2B promoter, and activity-dependent induction of NR2B expression involves a release of HDAC1 and recruitment of CREBBP. The calculated molecular weight of CREST is about 43 kDa, but the modified of CREST protein is 55 kDa (PMID: 25888396).

Storage

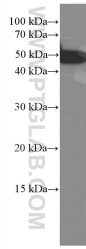
Storage:
Store at -80°C.

Storage Buffer:
PBS Only

For technical support and original validation data for this product please contact:
T: 1 (888) 4PTGLAB (1-888-478-4522) (toll free in USA), or 1(312) 455-8498 (outside USA) E: proteintech@ptglab.com
W: ptglab.com

This product is exclusively available under Proteintech Group brand and is not available to purchase from any other manufacturer.

Selected Validation Data



NIH/3T3 cells were subjected to SDS PAGE followed by western blot with 60314-1-Ig (CREST antibody) at dilution of 1:3000 incubated at room temperature for 1.5 hours. This data was developed using the same antibody clone with 60314-1-PBS in a different storage buffer formulation.