

For Research Use Only

pan Ras Monoclonal antibody, PBS Only (Capture/Detector)



Catalog Number: 60309-1-PBS

Featured Product

Basic Information

Catalog Number: 60309-1-PBS	GenBank Accession Number: BC013572	Purification Method: Protein A purification
Size: 100ug, Concentration: 1mg/ml by Nanodrop;	GeneID (NCBI): 3845	CloneNo.: 4H4G7
Source: Mouse	UNIPROT ID: P01116	
Isotype: IgG1	Full Name: v-Ki-ras2 Kirsten rat sarcoma viral oncogene homolog	
Immunogen Catalog Number: AG2700	Calculated MW: 188 aa, 21 kDa	
	Observed MW: 21 kDa	

Applications

Tested Applications:
WB, IHC, IF/ICC, FC (Intra), IP, Cytometric bead array, Indirect ELISA

Species Specificity:
human, mouse, rat, pig, rabbit, chicken

Product Information

60309-1-PBS targets pan Ras as part of a matched antibody pair.

MP50398-1: 60309-2-PBS capture and 60309-1-PBS detection (validated in Cytometric bead array)

MP80009-1: 60309-1-PBS capture and 81615-1-PBS detection (validated in Cytometric bead array)

Unconjugated mouse monoclonal antibody pair in PBS only (BSA and azide free) storage buffer at a concentration of 1 mg/mL, ready for conjugation.

This conjugation ready format makes antibodies ideal for use in many applications including: ELISAs, multiplex assays requiring matched pairs, mass cytometry, and multiplex imaging applications. Antibody use should be optimized by the end user for each application and assay.

Background Information

The 21 kDa guanine-nucleotide binding proteins (K-Ras, H-Ras, and N-Ras) belong to the Ras oncogene family, whose members are related to the transforming genes of mammalian sarcoma retroviruses. K-Ras, H-Ras, and N-Ras have similar structure and sequences. These proteins can bind GTP and GDP, and they have intrinsic GTPase activity. The ras genes are ubiquitously expressed although mRNA analysis suggests different level expression in tissue. Mutations in each ras gene frequently were found in different tumors, suggesting their involvement in the development of specific neoplasia. This antibody can recognize K-Ras, H-Ras, and N-Ras.

Storage

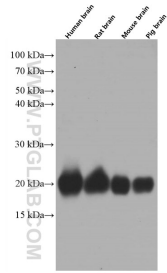
Storage:
Store at -80°C.

Storage Buffer:
PBS Only

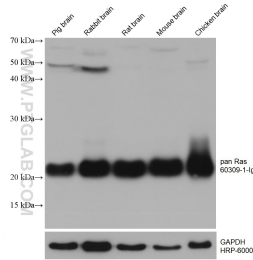
For technical support and original validation data for this product please contact:
T: 1 (888) 4PTGLAB (1-888-478-4522) (toll free in USA), or 1(312) 455-8498 (outside USA)
E: proteintech@ptglab.com
W: ptglab.com

This product is exclusively available under Proteintech Group brand and is not available to purchase from any other manufacturer.

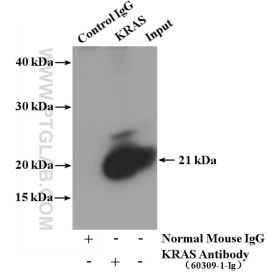
Selected Validation Data



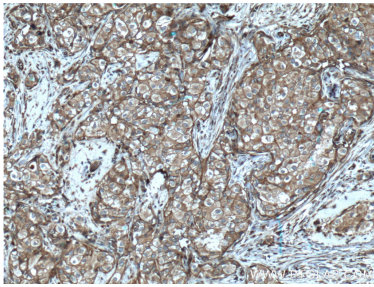
Various lysates were subjected to SDS PAGE followed by western blot with 60309-1-Ig (pan Ras Antibody) at dilution of 1:50000 incubated at room temperature for 1.5 hours. This data was developed using the same antibody clone with 60309-1-PBS in a different storage buffer formulation.



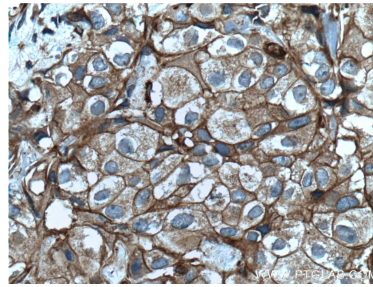
Various lysates were subjected to SDS PAGE followed by western blot with 60309-1-Ig (pan Ras antibody) at dilution of 1:50000 incubated at room temperature for 1.5 hours. This data was developed using the same antibody clone with 60309-1-PBS in a different storage buffer formulation.



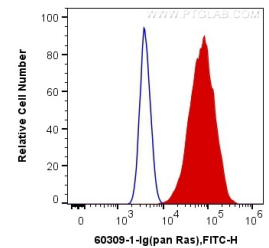
IP result of anti-pan Ras (IP:60309-1-Ig, 5ug; Detection:60309-1-Ig 1:2000) with mouse brain tissue lysate 4000 ug. This data was developed using the same antibody clone with 60309-1-PBS in a different storage buffer formulation.



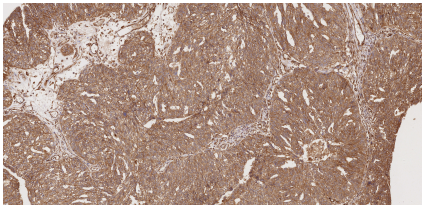
Immunohistochemical analysis of paraffin-embedded human breast cancer tissue slide using 60309-1-Ig (pan Ras Antibody) at dilution of 1:200 (under 10x lens). Heat mediated antigen retrieval with Tris-EDTA buffer (pH 9.0). This data was developed using the same antibody clone with 60309-1-PBS in a different storage buffer formulation.



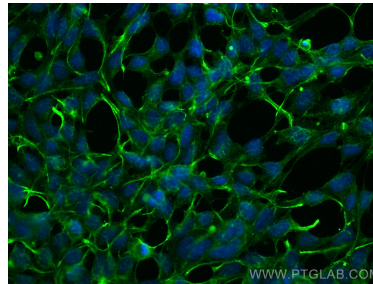
Immunohistochemical analysis of paraffin-embedded human breast cancer tissue slide using 60309-1-Ig (pan Ras Antibody) at dilution of 1:200 (under 40x lens). Heat mediated antigen retrieval with Tris-EDTA buffer (pH 9.0). This data was developed using the same antibody clone with 60309-1-PBS in a different storage buffer formulation.



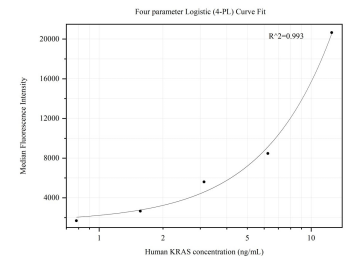
1X10⁶ HeLa cells were intracellularly stained with 0.4 ug Anti-Human pan Ras (60309-1-Ig, Clone:4H4G7) and CoraLite®488-Conjugated AffiniPure Goat Anti-Mouse IgG(H+L) at dilution 1:1000 (red), or 0.4 ug Control Antibody. Cells were fixed with 4% PFA and permeabilized with Flow Cytometry Perm Buffer (PF00011-C). This data was developed using the same antibody clone with 60309-1-PBS in a different storage buffer formulation.



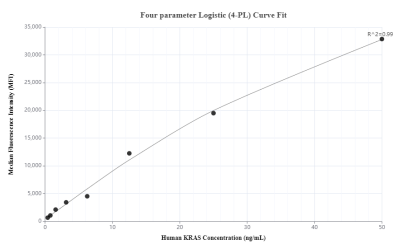
Immunohistochemical analysis of paraffin-embedded human ovary cancer tissue slide using 60309-1-Ig (pan Ras antibody) at dilution of 1:10000 (under 10x lens). Heat mediated antigen retrieval with Tris-EDTA buffer (pH 9.0). This data was developed using the same antibody clone with 60309-1-PBS in a different storage buffer formulation.



Immunofluorescent analysis of (-20°C Ethanol) fixed HEK-293 cells using pan Ras antibody (60309-1-Ig, Clone: 4H4G7) at dilution of 1:800 and CoraLite®488-Conjugated Goat Anti-Mouse IgG(H+L) (SA00013-1). This data was developed using the same antibody clone with 60309-1-PBS in a different storage buffer formulation.



Cytometric bead array standard curve of MP50398-1, KRAS Monoclonal Matched Antibody Pair, PBS Only. Capture antibody: 60309-2-PBS. Detection antibody: 60309-1-PBS. Standard:Ag2700. Range: 0.781-12.5 ng/mL



Cytometric bead array standard curve of MP80009-1, KRAS Hybrid Matched Antibody Pair, PBS Only. Capture antibody: 60309-1-PBS. Detection antibody: 81615-1-PBS. Standard: Ag2700. Range: 0.391-50 ng/mL.