

For Research Use Only

PTEN Monoclonal antibody, PBS Only (Detector)

Catalog Number: 60300-3-PBS



Basic Information

Catalog Number: 60300-3-PBS	GenBank Accession Number: BC005821	Purification Method: Protein A purification
Size: 100ug, Concentration: 1 mg/ml by Nanodrop;	GeneID (NCBI): 5728	CloneNo.: 4D8G9
Source: Mouse	UNIPROT ID: P60484	
Isotype: IgG2b	Full Name: phosphatase and tensin homolog	
Immunogen Catalog Number: AG17274	Calculated MW: 47 kDa	
	Observed MW: 55 kDa	

Applications

Tested Applications:
WB, Cytometric bead array, Indirect ELISA

Species Specificity:
human, mouse

Product Information

60300-3-PBS targets PTEN as part of a matched antibody pair.

MP50170-1: 60300-2-PBS capture and 60300-3-PBS detection (validated in Cytometric bead array)

Unconjugated mouse monoclonal antibody pair in PBS only (BSA and azide free) storage buffer at a concentration of 1 mg/mL, ready for conjugation.

This conjugation ready format makes antibodies ideal for use in many applications including: ELISAs, multiplex assays requiring matched pairs, mass cytometry, and multiplex imaging applications. Antibody use should be optimized by the end user for each application and assay.

Storage

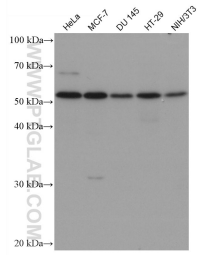
Storage:
Store at -80°C.

Storage Buffer:
PBS Only

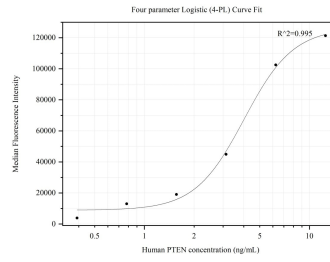
For technical support and original validation data for this product please contact:
T: 1 (888) 4PTGLAB (1-888-478-4522) (toll free in USA), or 1(312) 455-8498 (outside USA) E: proteintech@ptglab.com
W: ptglab.com

This product is exclusively available under Proteintech Group brand and is not available to purchase from any other manufacturer.

Selected Validation Data



Various lysates were subjected to SDS PAGE followed by western blot with 60300-3-Ig (PTEN antibody) at dilution of 1:5000 incubated at room temperature for 1.5 hours. This data was developed using the same antibody clone with 60300-3-PBS in a different storage buffer formulation.



Cytometric bead array standard curve of MP50170-1, PTEN Monoclonal Matched Antibody Pair, PBS Only. Capture antibody: 60300-2-PBS. Detection antibody: 60300-3-PBS. Standard: Ag17274. Range: 0.391-12.5 ng/mL.