

For Research Use Only

# OPTN/Optineurin Monoclonal antibody, PBS Only



Catalog Number: 60293-1-PBS

Featured Product

## Basic Information

**Catalog Number:**

60293-1-PBS

**Size:**

100ug, Concentration: 1 mg/ml by  
Nanodrop;

**Source:**

Mouse

**Isotype:**

IgG1

**Immunogen Catalog Number:**

AG1272

**GenBank Accession Number:**

BC013876

**GeneID (NCBI):**

10133

**UNIPROT ID:**

Q96CV9

**Full Name:**

optineurin

**Calculated MW:**

66 kDa

**Observed MW:**

70-74 kDa

**Purification Method:**

Protein A purification

**CloneNo.:**

6C1H4

## Applications

**Tested Applications:**

WB, IHC, IF/ICC, Indirect ELISA

**Species Specificity:**

human

## Background Information

OPTN, also named as FIP2, GLC1E, HIP7, HYPL and NRP, plays a neuroprotective role in the eye and optic nerve. It is probably part of the TNF-alpha signaling pathway that can shift the equilibrium toward induction of cell death. OPTN may act by regulating membrane trafficking and cellular morphogenesis via a complex that contains Rab8 and huntingtin (HD). OPTN may constitute a cellular target for adenovirus E3 14.7, an inhibitor of TNF-alpha functions, thereby affecting cell death. Defects in OPTN are a cause of susceptibility to normal pressure glaucoma (NPG). OPTN mutated in adult-onset primary open angle glaucoma. It supports the protective role of OPTN in the trabecular meshwork.

## Storage

**Storage:**

Store at -80°C.

**Storage Buffer:**

PBS Only

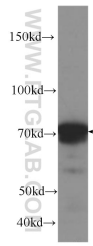
For technical support and original validation data for this product please contact:

T: 1 (888) 4PTGLAB (1-888-478-4522) (toll free  
in USA), or 1(312) 455-8498 (outside USA)

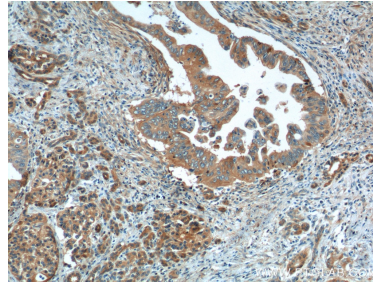
E: [proteintech@ptglab.com](mailto:proteintech@ptglab.com)  
W: [ptglab.com](http://ptglab.com)

This product is exclusively available under Proteintech Group brand and is not available to purchase from any other manufacturer.

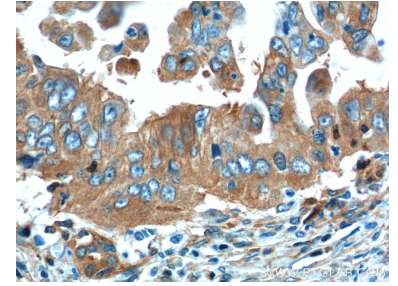
## Selected Validation Data



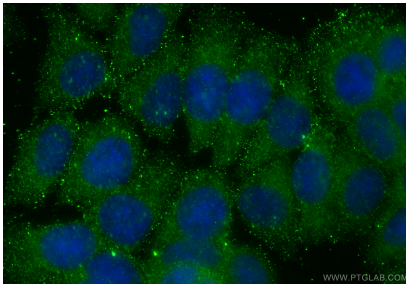
human heart tissue were subjected to SDS PAGE followed by western blot with 60293-1-Ig (OPTN Antibody) at dilution of 1:1000 incubated at room temperature for 1.5 hours. This data was developed using the same antibody clone with 60293-1-PBS in a different storage buffer formulation.



Immunohistochemical analysis of paraffin-embedded human pancreas cancer tissue slide using 60293-1-Ig (OPTN Antibody) at dilution of 1:200 (under 10x lens). This data was developed using the same antibody clone with 60293-1-PBS in a different storage buffer formulation.



Immunohistochemical analysis of paraffin-embedded human pancreas cancer tissue slide using 60293-1-Ig (OPTN Antibody) at dilution of 1:200 (under 40x lens). This data was developed using the same antibody clone with 60293-1-PBS in a different storage buffer formulation.



Immunofluorescent analysis of (-20°C Methanol) fixed MCF-7 cells using OPTN antibody (60293-1-Ig, Clone: 6C1H4 ) at dilution of 1:800 and CoraLite®488-Conjugated Goat Anti-Mouse IgG(H+L) (SA00013-1). This data was developed using the same antibody clone with 60293-1-PBS in a different storage buffer formulation.