

For Research Use Only

CD45 Monoclonal antibody, PBS Only (Capture)

Catalog Number: 60287-4-PBS



Basic Information

Catalog Number: 60287-4-PBS	GenBank Accession Number: BC014239	Purification Method: Protein G Magarose purification
Size: 100ug , Concentration: 1 mg/ml by Nanodrop;	GeneID (NCBI): 5788	CloneNo.: 2H11F11
Source: Mouse	ENSEMBL Gene ID: ENSG00000081237	
Isotype: IgG1	UNIPROT ID: P08575	
Immunogen Catalog Number: AG13712	Full Name: protein tyrosine phosphatase, receptor type, C	
	Calculated MW: 1304 aa, 147 kDa	

Applications

Tested Applications:
Cytometric bead array, Indirect ELISA

Species Specificity:
human

Product Information

60287-4-PBS targets CD45 as part of a matched antibody pair:

MP50221-2: 60287-4-PBS capture and 60287-5-PBS detection (validated in Cytometric bead array)

MP50221-3: 60287-4-PBS capture and 60287-6-PBS detection (validated in Cytometric bead array)

Unconjugated mouse monoclonal antibody pair in PBS only (BSA and azide free) storage buffer at a concentration of 1 mg/mL, ready for conjugation.

This conjugation ready format makes antibodies ideal for use in many applications including: ELISAs, multiplex assays requiring matched pairs, mass cytometry, and multiplex imaging applications. Antibody use should be optimized by the end user for each application and assay.

Storage

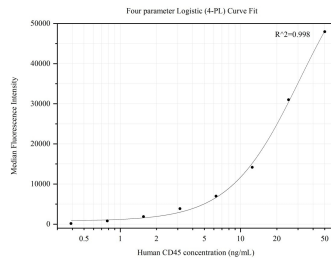
Storage:
Store at -80°C.

Storage Buffer:
PBS Only

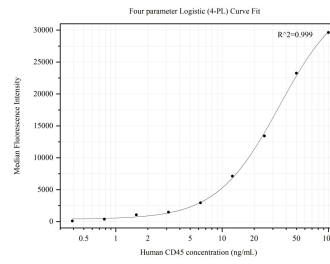
For technical support and original validation data for this product please contact:
T: 1 (888) 4PTGLAB (1-888-478-4522) (toll free in USA), or 1(312) 455-8498 (outside USA) E: proteintech@ptglab.com
W: ptglab.com

This product is exclusively available under Proteintech Group brand and is not available to purchase from any other manufacturer.

Selected Validation Data



Cytometric bead array standard curve of MP50221-2, CD45 Monoclonal Matched Antibody Pair, PBS Only. Capture antibody: 60287-4-PBS. Detection antibody: 60287-5-PBS. Standard:Ag13712. Range: 0.391-50 ng/mL



Cytometric bead array standard curve of MP50221-3, CD45 Monoclonal Matched Antibody Pair, PBS Only. Capture antibody: 60287-4-PBS. Detection antibody: 60287-6-PBS. Standard:Ag13712. Range: 0.391-100 ng/mL