

For Research Use Only

ATP5C1 Monoclonal antibody, PBS Only



Catalog Number: 60284-1-PBS

Basic Information

Catalog Number: 60284-1-PBS	GenBank Accession Number: BC000931	Purification Method: Protein A purification
Size: 100ug, Concentration: 1mg/ml by Nanodrop;	GeneID (NCBI): 509	CloneNo.: 1B5A2
Source: Mouse	UNIPROT ID: P36542	
Isotype: IgG2a	Full Name: ATP synthase, H ⁺ transporting, mitochondrial F1 complex, gamma polypeptide 1	
Immunogen Catalog Number: AG1343	Calculated MW: 33 kDa	
	Observed MW: 33 kDa	

Applications

Tested Applications:
WB, IHC, IF/ICC, Indirect ELISA

Species Specificity:
human

Background Information

ATP5C1(ATP synthase subunit gamma, mitochondrial) is also named as ATP5C, ATP5CL1 and belongs to the ATPase gamma chain family. Some scientists reported the complete sequence of the gene for the human ATP synthase gamma subunit and described tissue-specific isoforms of the subunit generated by alternative splicing of exon 9. The Liver (L) isoform differed from the heart (H) isoform by the addition of a single amino acid (asp273) at the C terminus. (PMID:8227057).

Storage

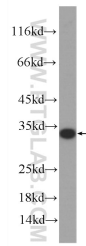
Storage:
Store at -80°C.

Storage Buffer:
PBS Only

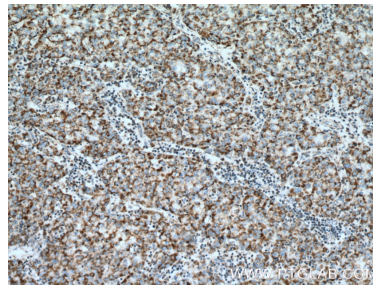
For technical support and original validation data for this product please contact:
T: 1 (888) 4PTGLAB (1-888-478-4522) (toll free in USA), or 1(312) 455-8498 (outside USA) E: proteintech@ptglab.com
W: ptglab.com

This product is exclusively available under Proteintech Group brand and is not available to purchase from any other manufacturer.

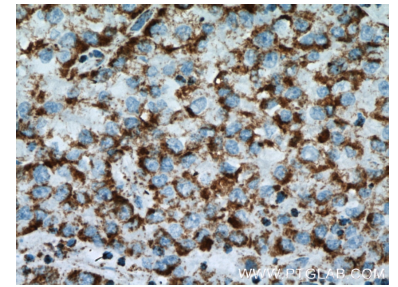
Selected Validation Data



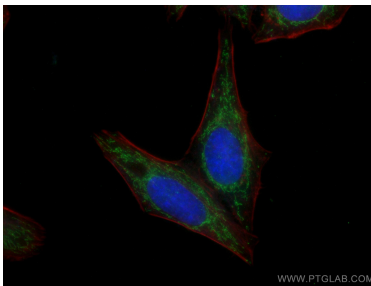
human heart tissue were subjected to SDS PAGE followed by western blot with 60284-1-Ig (ATP5C1 Antibody) at dilution of 1:1000 incubated at room temperature for 1.5 hours. This data was developed using the same antibody clone with 60284-1-PBS in a different storage buffer formulation.



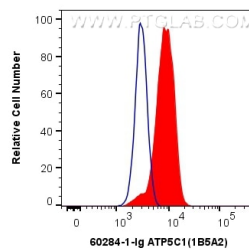
Immunohistochemical analysis of paraffin-embedded human liver cancer tissue slide using 60284-1-Ig (ATP5C1 Antibody) at dilution of 1:200 (under 10x lens). Heat mediated antigen retrieval with Tris-EDTA buffer (pH 9.0). This data was developed using the same antibody clone with 60284-1-PBS in a different storage buffer formulation.



Immunohistochemical analysis of paraffin-embedded human liver cancer tissue slide using 60284-1-Ig (ATP5C1 Antibody) at dilution of 1:200 (under 40x lens). Heat mediated antigen retrieval with Tris-EDTA buffer (pH 9.0). This data was developed using the same antibody clone with 60284-1-PBS in a different storage buffer formulation.



Immunofluorescent analysis of (4% PFA) fixed HepG2 cells using 60284-1-Ig (ATP5C1 antibody), at dilution of 1:100 and CoraLite@488-Conjugated AffiniPure Goat Anti-Mouse IgG(H+L). This data was developed using the same antibody clone with 60284-1-PBS in a different storage buffer formulation.



1X10⁶ HeLa cells were intracellularly stained with 0.4 ug Anti-Human ATP5C1 (60284-1-Ig, Clone:1B5A2) and CoraLite@488-Conjugated AffiniPure Goat Anti-Mouse IgG(H+L) at dilution 1:1000 (red), or 0.4 ug Isotype Control. Cells were fixed with 4% PFA and permeabilized with Flow Cytometry Perm Buffer (PF00011-C). This data was developed using the same antibody clone with 60284-1-PBS in a different storage buffer formulation.