

For Research Use Only

IL-10 Monoclonal antibody

Catalog Number: 60269-1-Ig

Featured Product

109 Publications



Basic Information

Catalog Number: 60269-1-Ig	GenBank Accession Number: BC104252	Purification Method: Protein A purification
Size: 150ul, Concentration: 1500 ug/ml by Nanodrop and 567 ug/ml by Bradford method using BSA as the standard;	GeneID (NCBI): 3586	CloneNo.: 8E4B6
Source: Mouse	UNIPROT ID: P22301	Recommended Dilutions: WB 1:2000-1:8000 IHC 1:50-1:500 IF/ICC 1:200-1:800
Isotype: IgG2b	Full Name: interleukin 10	
Immunogen Catalog Number: AG14870	Calculated MW: 21 kDa	
	Observed MW: 22 kDa	

Applications

Tested Applications: WB, IHC, IF/ICC, ELISA	Positive Controls: WB : ag14870, IHC : human pancreas cancer tissue, IF/ICC : MOLT-4 cells,
Cited Applications: WB, IHC, IF, ELISA, Cell treatment	
Species Specificity: human	
Cited Species: human, rat, rabbit, zebrafish	
Note-IHC: suggested antigen retrieval with TE buffer pH 9.0; (*) Alternatively, antigen retrieval may be performed with citrate buffer pH 6.0	

Background Information

Interleukin (IL)-10 is an anti-inflammatory cytokine, produced by T helper (Th) cells, macrophages, monocytes, and B cells, that plays a crucial role in preventing inflammatory and autoimmune pathologies. It downregulates the expression of Th1 cytokines, MHC class II antigens, and co-stimulatory molecules on macrophages. It also enhances B cell survival, proliferation, and antibody production. IL-10 can block NF- κ B activity, and is involved in the regulation of the JAK-STAT signaling pathway. IL-10, along with its receptors, describes an important role in pathogenesis of various diseases, including infectious, inflammatory, autoimmune diseases. IL-10 mutations are associated with an increased susceptibility to HIV-1 infection and rheumatoid arthritis.

Notable Publications

Author	Pubmed ID	Journal	Application
Xinmei Huang	34478541	J Clin Endocrinol Metab	IHC
Yan Yang	34582523	Biomater Sci	IHC
Teresa W-M Fan	36150727	J Immunol	

Storage

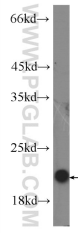
Storage:
Store at -20°C. Stable for one year after shipment.
Storage Buffer:
PBS with 0.02% sodium azide and 50% glycerol pH 7.3.
Aliquoting is unnecessary for -20°C storage

*** 20ul sizes contain 0.1% BSA

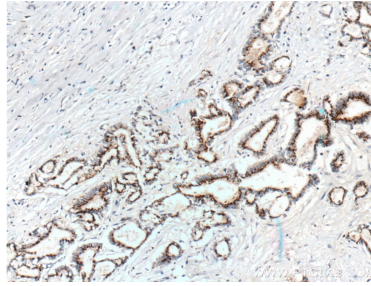
For technical support and original validation data for this product please contact:
T: 1 (888) 4PTGLAB (1-888-478-4522) (toll free in USA), or 1(312) 455-8498 (outside USA)
E: proteintech@ptglab.com
W: ptglab.com

This product is exclusively available under Proteintech Group brand and is not available to purchase from any other manufacturer.

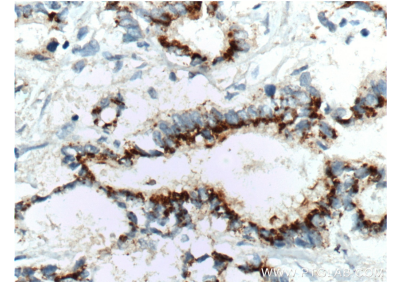
Selected Validation Data



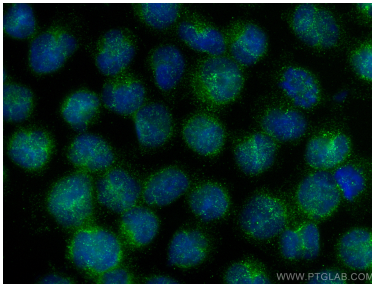
Recombinant protein were subjected to SDS PAGE followed by western blot with 60269-1-Ig (IL-10 antibody at dilution of 1:5000 incubated at room temperature for 1.5 hours.



Immunohistochemical analysis of paraffin-embedded human pancreas cancer tissue slide using 60269-1-Ig (IL-10 antibody at dilution of 1:200 (under 10x lens). Heat mediated antigen retrieval with Tris-EDTA buffer (pH 9.0).



Immunohistochemical analysis of paraffin-embedded human pancreas cancer tissue slide using 60269-1-Ig (IL-10 antibody at dilution of 1:200 (under 40x lens). Heat mediated antigen retrieval with Tris-EDTA buffer (pH 9.0).



Immunofluorescent analysis of (4% PFA) fixed MOLT-4 cells using IL-10 antibody (60269-1-Ig, Clone: 8E4B6) at dilution of 1:400 and CoraLite®488-Conjugated Goat Anti-Mouse IgG(H+L).