

For Research Use Only

SND1 Monoclonal antibody, PBS Only



Catalog Number: 60265-1-PBS

Featured Product

Basic Information

Catalog Number: 60265-1-PBS	GenBank Accession Number: BC017180	Purification Method: Protein G purification
Size: 100ug , Concentration: 1 mg/ml by Nanodrop;	GeneID (NCBI): 27044	CloneNo.: 1A6A4
Source: Mouse	UNIPROT ID: Q7KZF4	
Isotype: IgG1	Full Name: staphylococcal nuclease and tudor domain containing 1	
Immunogen Catalog Number: AG1200	Calculated MW: 101 kDa	
	Observed MW: 101 kDa	

Applications

Tested Applications:
WB, IP, IF, IHC, Indirect ELISA

Species Specificity:
human, mouse, rat

Background Information

Staphylococcal nuclease domain-containing 1 (SND1), is a multifunctional nuclease that consists of four staphylococcal nuclease domains and a tudor domain. SND1 acts as a coactivator that facilitates transcriptional activity of STAT5, 6 and c-Myc. SND1 is a comprising part of the RNA-induced silencing complex(RISC), and takes part in the functions of miRNA, regulates transcription through transcriptional coactivation, RNA interference, RNA splicing, and RNA editing. Higher level of SND1 has been found in colon cancer and prostate cancer, can promote HCC angiogenesis in xenograft model through induction of angiogenic factors.

Storage

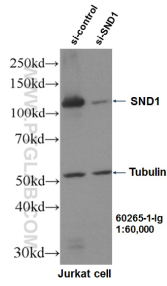
Storage:
Store at -80°C.

Storage Buffer:
PBS Only

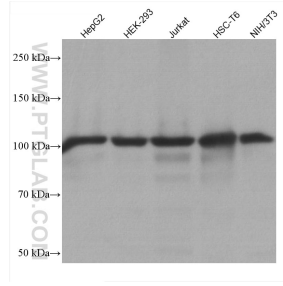
For technical support and original validation data for this product please contact:
T: 1 (888) 4PTGLAB (1-888-478-4522) (toll free in USA), or 1(312) 455-8498 (outside USA) E: proteintech@ptglab.com
W: ptglab.com

This product is exclusively available under Proteintech Group brand and is not available to purchase from any other manufacturer.

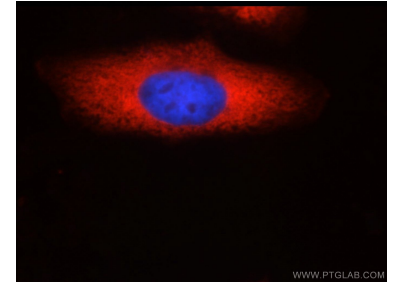
Selected Validation Data



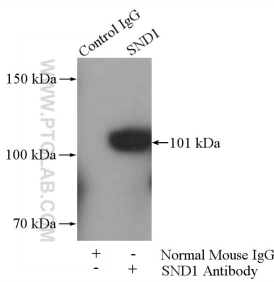
WB result of SND1 antibody (60265-1-Ig, 1:60,000) with si-Control and si-SND1 transfected Jurkat cells. This data was developed using the same antibody clone with 60265-1-PBS in a different storage buffer formulation.



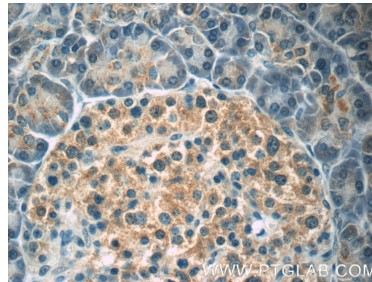
Various lysates were subjected to SDS PAGE followed by western blot with 60265-1-Ig (SND1 antibody) at dilution of 1:20000 incubated at room temperature for 1.5 hours. This data was developed using the same antibody clone with 60265-1-PBS in a different storage buffer formulation.



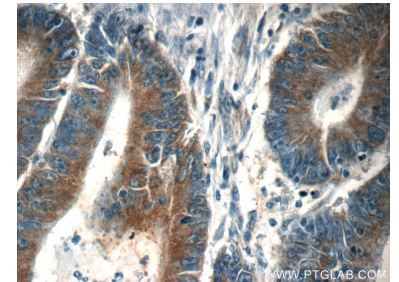
Immunofluorescent analysis of HepG2 cells using 60265-1-Ig(SND1 antibody) at dilution of 1:50 and Rhodamine-labeled goat anti-mouse IgG (red). This data was developed using the same antibody clone with 60265-1-PBS in a different storage buffer formulation.



IP result of anti-SND1 (IP:60265-1-Ig, 5ug; Detection:60265-1-Ig 1:500) with HeLa cells lysate 1400ug. This data was developed using the same antibody clone with 60265-1-PBS in a different storage buffer formulation.



Immunohistochemical analysis of paraffin-embedded human pancreas tissue slide using 60265-1-Ig (SND1 Antibody) at dilution of 1:50 (under 40x lens). This data was developed using the same antibody clone with 60265-1-PBS in a different storage buffer formulation.



Immunohistochemical analysis of paraffin-embedded human colon cancer tissue slide using 60265-1-Ig (SND1 Antibody) at dilution of 1:50 (under 40x lens). This data was developed using the same antibody clone with 60265-1-PBS in a different storage buffer formulation.