

For Research Use Only

# Napsin A Monoclonal antibody, PBS Only

Catalog Number:60259-2-PBS



## Basic Information

<b>Catalog Number:</b> 60259-2-PBS	<b>GenBank Accession Number:</b> BC017842	<b>Purification Method:</b> Protein A purification
<b>Size:</b> 100ug , Concentration: 1mg/ml by Nanodrop;	<b>GeneID (NCBI):</b> 9476	<b>CloneNo.:</b> 1H7F2
<b>Source:</b> Mouse	<b>UNIPROT ID:</b> O96009	
<b>Isotype:</b> IgG1	<b>Full Name:</b> napsin A aspartic peptidase	
<b>Immunogen Catalog Number:</b> AG9721	<b>Calculated MW:</b> 420 aa, 45 kDa	

## Applications

**Tested Applications:**  
IHC, IF/ICC, FC (Intra), ELISA

**Species Specificity:**  
human

## Background Information

Napsin is found in two isoforms, napsin A and B, with highly homologous nucleotide sequences (91.2%). Napsin A appears to be a functional proteinase, predominantly expressed in lung and kidney. Napsin B is transcribed exclusively in cells related to the immune system and lacks an in-frame stop codon and is believed to be a pseudogene.(PMID:12698189). Napsin A is superior to TTF-1 in distinguishing primary lung ACA from other carcinomas (except kidney), particularly primary lung small cell carcinoma, and primary thyroid carcinoma. (PMID:22288963).

## Storage

**Storage:**  
Store at -80°C.

**Storage Buffer:**  
PBS Only

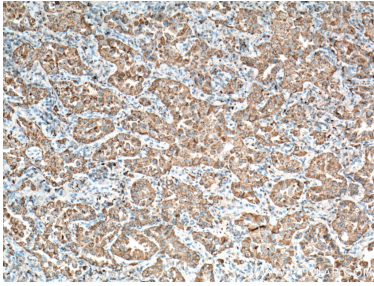
For technical support and original validation data for this product please contact:

T: 1 (888) 4PTGLAB (1-888-478-4522) (toll free in USA), or 1(312) 455-8498 (outside USA)

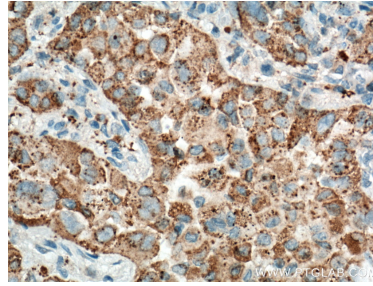
E: [proteintech@ptglab.com](mailto:proteintech@ptglab.com)  
W: [ptglab.com](http://ptglab.com)

**This product is exclusively available under Proteintech Group brand and is not available to purchase from any other manufacturer.**

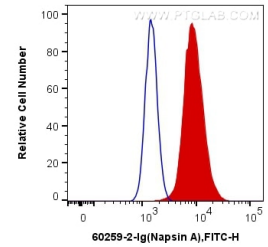
## Selected Validation Data



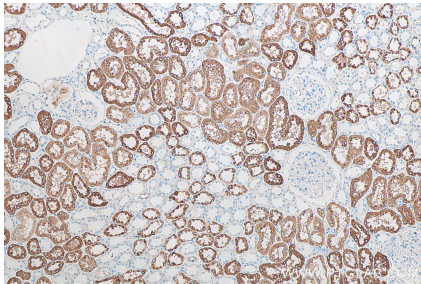
Immunohistochemical analysis of paraffin-embedded human lung cancer tissue slide using 60259-2-Ig (NAPSA antibody) at dilution of 1:4000 (under 10x lens. Heat mediated antigen retrieval with Tris-EDTA buffer (pH 9.0). This data was developed using the same antibody clone with 60259-2-PBS in a different storage buffer formulation.



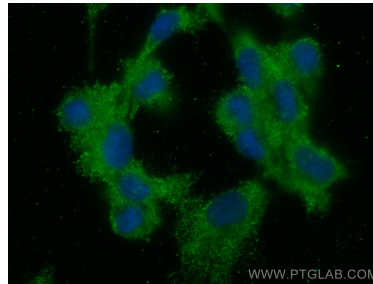
Immunohistochemical analysis of paraffin-embedded human lung cancer tissue slide using 60259-2-Ig (NAPSA antibody) at dilution of 1:4000 (under 40x lens. Heat mediated antigen retrieval with Tris-EDTA buffer (pH 9.0). This data was developed using the same antibody clone with 60259-2-PBS in a different storage buffer formulation.



1X10<sup>6</sup> A549 cells were intracellularly stained with 0.2 ug Anti-Human Napsin A (60259-2-Ig, Clone:1H7F2) and CoraLite®488-Conjugated AffiniPure Goat Anti-Mouse IgG(H+L) at dilution 1:1000 (red), or 0.2 ug Control Antibody. Cells were fixed with 4% PFA and permeabilized with Flow Cytometry Perm Buffer (PF00011-C). This data was developed using the same antibody clone with 60259-2-PBS in a different storage buffer formulation.



Immunohistochemical analysis of paraffin-embedded human kidney tissue slide using 60259-2-Ig (Napsin A antibody) at dilution of 1:10000 (under 10x lens). Heat mediated antigen retrieval with Tris-EDTA buffer (pH 9.0). This data was developed using the same antibody clone with 60259-2-PBS in a different storage buffer formulation.



Immunofluorescent analysis of (-20°C Methanol) fixed HUVEC cells using Napsin A antibody (60259-2-Ig, Clone: 1H7F2) at dilution of 1:400 and CoraLite®488-Conjugated AffiniPure Goat Anti-Mouse IgG(H+L). This data was developed using the same antibody clone with 60259-2-PBS in a different storage buffer formulation.