

For Research Use Only

MAPK13 Monoclonal antibody, PBS Only



Catalog Number: 60252-1-PBS

Featured Product

Basic Information

Catalog Number:

60252-1-PBS

Size:

100ug, Concentration: 1 mg/ml by Nanodrop;

Source:

Mouse

Isotype:

IgG1

Immunogen Catalog Number:

AG21240

GenBank Accession Number:

BC000433

GeneID (NCBI):

5603

UNIPROT ID:

O15264

Full Name:

mitogen-activated protein kinase 13

Calculated MW:

38 kDa

Observed MW:

38-42 kDa

Purification Method:

Protein A purification

CloneNo.:

1B12A6

Applications

Tested Applications:

WB, IHC, Indirect ELISA

Species Specificity:

human

Background Information

MAPK13 (Mitogen-activated protein kinase 13) is also named as PRKM13, SAPK4 and belongs to the protein kinase superfamily. MAPK13 is one of the four p38 MAPKs which play an important role in the cascades of cellular responses evoked by extracellular stimuli such as proinflammatory cytokines or physical stress leading to direct activation of transcription factors such as ELK1 and ATF2.

Storage

Storage:

Store at -80°C.

Storage Buffer:

PBS Only

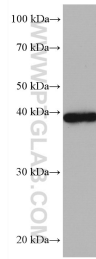
For technical support and original validation data for this product please contact:

T: 1 (888) 4PTGLAB (1-888-478-4522) (toll free in USA), or 1(312) 455-8498 (outside USA)

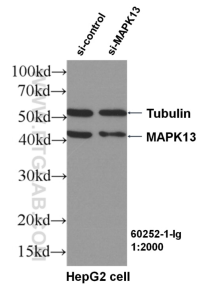
E: proteintech@ptglab.com
W: ptglab.com

This product is exclusively available under Proteintech Group brand and is not available to purchase from any other manufacturer.

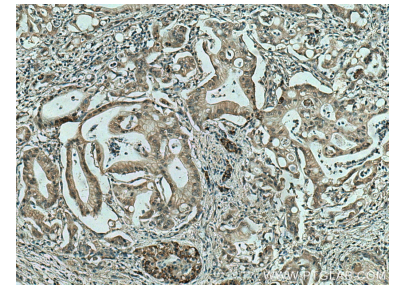
Selected Validation Data



Ramos cells were subjected to SDS PAGE followed by western blot with 60252-1-Ig (MAPK13 antibody) at dilution of 1:3000 incubated at room temperature for 1.5 hours. This data was developed using the same antibody clone with 60252-1-PBS in a different storage buffer formulation.



WB result of MAPK13 antibody (60252-1-Ig, 1:2000) with si-Control and si-MAPK13 transfected HepG2 cells. This data was developed using the same antibody clone with 60252-1-PBS in a different storage buffer formulation.



Immunohistochemical analysis of paraffin-embedded human pancreas cancer tissue slide using 60252-1-Ig (MAPK13 antibody) at dilution of 1:300 (under 10x lens). Heat mediated antigen retrieval with Tris-EDTA buffer (pH 9.0). This data was developed using the same antibody clone with 60252-1-PBS in a different storage buffer formulation.