

For Research Use Only

# PGRMC2 Monoclonal antibody, PBS Only



Catalog Number: 60249-1-PBS

Featured Product

## Basic Information

Catalog Number:

60249-1-PBS

Size:

100ug, Concentration: 1 mg/ml by Nanodrop;

Source:

Mouse

Isotype:

IgG2a

Immunogen Catalog Number:

AG20077

GenBank Accession Number:

BC016692

GeneID (NCBI):

10424

UNIPROT ID:

O15173

Full Name:

progesterone receptor membrane component 2

Calculated MW:

223 aa, 24 kDa

Observed MW:

24+28 kDa

Purification Method:

Protein A purification

CloneNo.:

5F10D7

## Applications

Tested Applications:

WB, IF, IHC, Indirect ELISA

Species Specificity:

human, pig

## Background Information

Membrane-associated progesterone receptor component 2 (PGRMC2), also known as DG6 or PMBP, belongs to the cytochrome b5 family. This protein might play a role in cancer. The gene of PGRMC2 maps to chromosome 4q26, and encodes a 223-amino acid single-pass membrane protein with a cytochrome b5 heme-binding domain in its cytoplasmic domain. PGRMC2 has a calculated molecular weight of 24 kDa. The band of about 28 kDa detected by this monoclonal antibody is unknown but may represent phosphorylated form of PGRMC2 (PMID: 28104494).

## Storage

Storage:

Store at -80°C.

Storage Buffer:

PBS Only

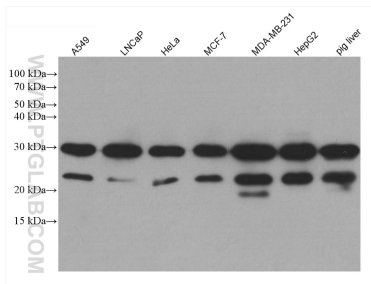
For technical support and original validation data for this product please contact:

T: 1 (888) 4PTGLAB (1-888-478-4522) (toll free in USA), or 1(312) 455-8498 (outside USA)

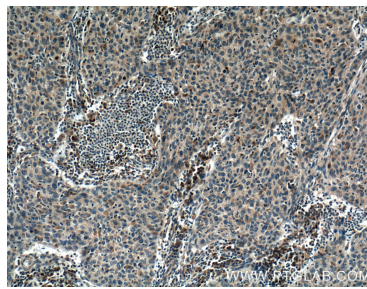
E: [proteintech@ptglab.com](mailto:proteintech@ptglab.com)  
W: [ptglab.com](http://ptglab.com)

This product is exclusively available under Proteintech Group brand and is not available to purchase from any other manufacturer.

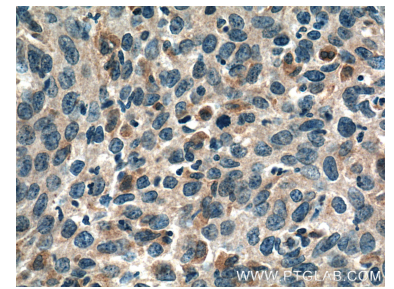
## Selected Validation Data



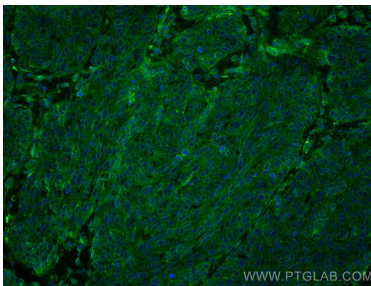
Various lysates were subjected to SDS PAGE followed by western blot with 60249-1-Ig (PGRMC2 antibody) at dilution of 1:5000 incubated at room temperature for 1.5 hours. This data was developed using the same antibody clone with 60249-1-PBS in a different storage buffer formulation.



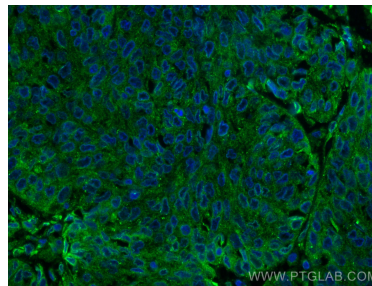
Immunohistochemical analysis of paraffin-embedded human cervical cancer tissue slide using 60249-1-Ig (PGRMC2 Antibody) at dilution of 1:400 (under 10x lens). Heat mediated antigen retrieval with Tris-EDTA buffer (pH 9.0). This data was developed using the same antibody clone with 60249-1-PBS in a different storage buffer formulation.



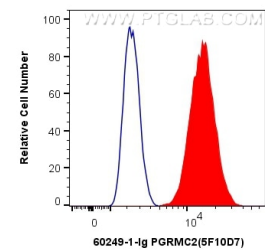
Immunohistochemical analysis of paraffin-embedded human cervical cancer tissue slide using 60249-1-Ig (PGRMC2 Antibody) at dilution of 1:400 (under 40x lens). Heat mediated antigen retrieval with Tris-EDTA buffer (pH 9.0). This data was developed using the same antibody clone with 60249-1-PBS in a different storage buffer formulation.



Immunofluorescent analysis of (4% PFA) fixed human cervical cancer tissue using PGRMC2 antibody (60249-1-Ig, Clone: 5F10D7) at dilution of 1:400 and CoraLite@488-Conjugated AffiniPure Goat Anti-Mouse IgG(H+L). This data was developed using the same antibody clone with 60249-1-PBS in a different storage buffer formulation.



Immunofluorescent analysis of (4% PFA) fixed human cervical cancer tissue using PGRMC2 antibody (60249-1-Ig, Clone: 5F10D7) at dilution of 1:400 and CoraLite@488-Conjugated AffiniPure Goat Anti-Mouse IgG(H+L). This data was developed using the same antibody clone with 60249-1-PBS in a different storage buffer formulation.



1X10<sup>6</sup> HepG2 cells were intracellularly stained with 0.4 ug Anti-Human PGRMC2 (60249-1-Ig, Clone:5F10D7) and CoraLite@488-Conjugated AffiniPure Goat Anti-Mouse IgG(H+L) at dilution 1:1000 (red), or 0.4 ug Mouse IgG2a Isotype Control (66360-2-Ig, Clone: K11A1B2A2) (blue). Cells were fixed with 4% PFA and permeabilized with Flow Cytometry Perm Buffer (PF00011-C). This data was developed using the same antibody clone with 60249-1-PBS in a

