

For Research Use Only

CDX2 Monoclonal antibody, PBS Only (Capture)

Catalog Number: 60243-1-PBS

Featured Product



Basic Information

Catalog Number: 60243-1-PBS	GenBank Accession Number: BC014461	Purification Method: Protein A purification
Size: 100ug, Concentration: 1mg/ml by Nanodrop;	GeneID (NCBI): 1045	CloneNo.: 5A4E6
Source: Mouse	UNIPROT ID: Q99626	
Isotype: IgG1	Full Name: caudal type homeobox 2	
Immunogen Catalog Number: AG17644	Calculated MW: 313 aa, 34 kDa	
	Observed MW: 33-40 kDa	

Applications

Tested Applications:
WB, IF/ICC, Cytometric bead array, Indirect ELISA

Species Specificity:
pig, human

Product Information

60243-1-PBS targets CDX2 as part of a matched antibody pair:

MP50121-1: 60243-1-PBS capture and 60243-3-PBS detection (validated in Cytometric bead array)

Unconjugated mouse monoclonal antibody pair in PBS only (BSA and azide free) storage buffer at a concentration of 1 mg/mL, ready for conjugation.

This conjugation ready format makes antibodies ideal for use in many applications including: ELISAs, multiplex assays requiring matched pairs, mass cytometry, and multiplex imaging applications. Antibody use should be optimized by the end user for each application and assay.

Background Information

CDX2, also named as Homeobox protein CDX-2, is a 313 amino acid protein, which contains one homeobox DNA-binding domain and belongs to the Caudal homeobox family. CDX2 localizes in the nucleus and is involved in the transcriptional regulation of multiple genes expression in the intestinal epithelium. The relative expression of CDX1 to CDX2 protein may be important in the anterior to posterior patterning of the intestinal epithelium and in defining patterns of proliferation and differentiation along the crypt-villus axis. Both Cdx1 and Cdx2 genes must be expressed to reduce tumorigenic potential, to increase sensitivity to apoptosis, and to reduce cell migration, suggesting that the two genes control the normal phenotype by independent pathways.

Storage

Storage:
Store at -80°C.

Storage Buffer:
PBS Only

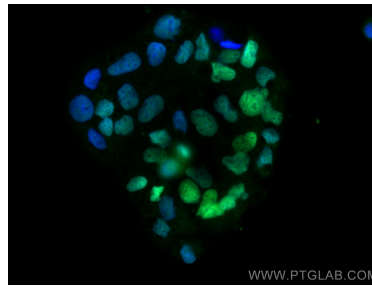
For technical support and original validation data for this product please contact:
T: 1 (888) 4PTGLAB (1-888-478-4522) (toll free in USA), or 1(312) 455-8498 (outside USA)
E: proteintech@ptglab.com
W: ptglab.com

This product is exclusively available under Proteintech Group brand and is not available to purchase from any other manufacturer.

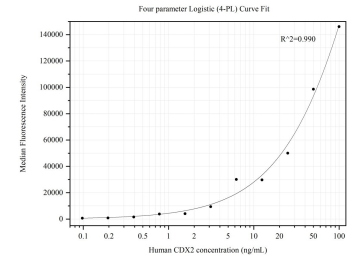
Selected Validation Data



COLO 320 cells were subjected to SDS PAGE followed by western blot with 60243-1-Ig (CDX2 antibody) at dilution of 1:3000 incubated at room temperature for 1.5 hours. This data was developed using the same antibody clone with 60243-1-PBS in a different storage buffer formulation.



Immunofluorescent analysis of (4% PFA) fixed Caco-2 cells using CDX2 antibody (60243-1-Ig, Clone: 5A4E6) at dilution of 1:800 and CoraLite®488-Conjugated Goat Anti-Mouse IgG(H+L). This data was developed using the same antibody clone with 60243-1-PBS in a different storage buffer formulation.



Cytometric bead array standard curve of MP50121-1, CDX2 Monoclonal Matched Antibody Pair, PBS Only. Capture antibody: 60243-1-PBS. Detection antibody: 60243-3-PBS. Standard: Ag17644. Range: 0.098-100 ng/mL