

For Research Use Only

COTL1 Monoclonal antibody, PBS Only



Catalog Number: 60237-1-PBS

Featured Product

Basic Information

Catalog Number: 60237-1-PBS	GenBank Accession Number: BC010884	Purification Method: Protein G purification
Size: 100ug , Concentration: 1 mg/ml by Nanodrop;	GeneID (NCBI): 23406	CloneNo.: 4A3D9
Source: Mouse	UNIPROT ID: Q14019	
Isotype: IgG1	Full Name: coactosin-like 1 (Dictyostelium)	
Immunogen Catalog Number: AG1230	Calculated MW: 16 kDa	
	Observed MW: 14-16 kDa	

Applications

Tested Applications:
WB, IF, IHC, Indirect ELISA

Species Specificity:
human, mouse

Background Information

COTL1, also named as CLP, binds to F-actin in a calcium-independent manner. And it has no direct effect on actin depolymerization.

Storage

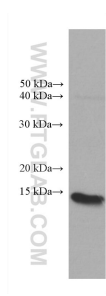
Storage:
Store at -80°C.

Storage Buffer:
PBS Only

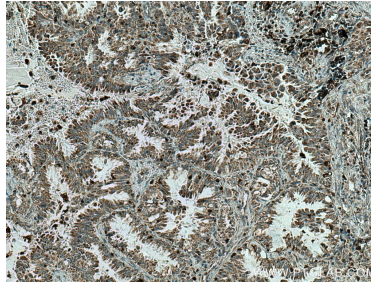
For technical support and original validation data for this product please contact:
T: 1 (888) 4PTGLAB (1-888-478-4522) (toll free in USA), or 1(312) 455-8498 (outside USA) E: proteintech@ptglab.com
W: ptglab.com

This product is exclusively available under Proteintech Group brand and is not available to purchase from any other manufacturer.

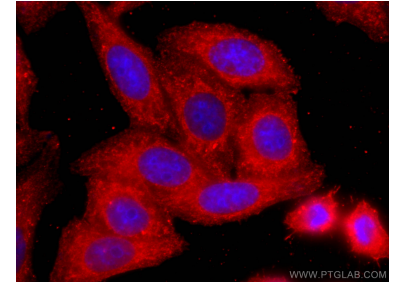
Selected Validation Data



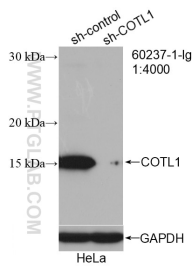
A431 cells were subjected to SDS PAGE followed by western blot with 60237-1-Ig (COTL1 antibody) at dilution of 1:5000 incubated at room temperature for 1.5 hours. This data was developed using the same antibody clone with 60237-1-PBS in a different storage buffer formulation.



Immunohistochemical analysis of paraffin-embedded human lung cancer tissue slide using 60237-1-Ig (COTL1 antibody) at dilution of 1:1000 (under 10x lens). Heat mediated antigen retrieval with Tris-EDTA buffer (pH 9.0). This data was developed using the same antibody clone with 60237-1-PBS in a different storage buffer formulation.



Immunofluorescent analysis of (-20°C Ethanol) fixed HepG2 cells using COTL1 antibody (60237-1-Ig, Clone: 4A3D9) at dilution of 1:400 and CoraLite®594-Conjugated AffiniPure Goat Anti-Mouse IgG(H+L). This data was developed using the same antibody clone with 60237-1-PBS in a different storage buffer formulation.



WB result of COTL1 antibody (60237-1-Ig; 1:4000; incubated at room temperature for 1.5 hours) with sh-Control and sh-COTL1 transfected HeLa cells. This data was developed using the same antibody clone with 60237-1-PBS in a different storage buffer formulation.